

## The Cameronian Rant

*Suth.p0*

Musical score for 'The Cameronian Rant' in treble clef, key of D major (one sharp), and common time (C). The piece consists of three staves of music. The first staff begins with a quarter rest followed by a series of eighth and sixteenth notes. The second and third staves continue the melody with similar rhythmic patterns, ending with repeat signs.

## Favourite

*Suth.p1no1*

Musical score for 'Favourite' in treble clef, key of D major (one sharp), and 2/4 time. The piece consists of three staves of music. The first staff starts with a quarter rest followed by eighth and sixteenth notes. The second and third staves continue the melody, featuring a mix of eighth and sixteenth notes, and ending with repeat signs.

## Paddy Whack

*Suth.p1no2*

Musical score for 'Paddy Whack' in treble clef, key of D major (one sharp), and 6/8 time. The piece consists of three staves of music. The first staff begins with a quarter rest followed by eighth and sixteenth notes. The second staff includes a double bar line with repeat dots. The third staff continues the melody and ends with a repeat sign.

## Kiss About the Haystack

*Suth.p2no3*

Musical score for 'Kiss About the Haystack' in G major and 6/8 time. The score consists of three staves of music. The first staff begins with a treble clef, a key signature of one sharp (F#), and a 6/8 time signature. The melody is composed of eighth and sixteenth notes. The second staff features a repeat sign (double bar line with two dots) in the middle. The third staff concludes the piece with a double bar line and repeat dots.

## Salt Beef and Dumplings

*Suth.p2no4*

Musical score for 'Salt Beef and Dumplings' in G major and common time (C). The score consists of three staves of music. The first staff begins with a treble clef, a key signature of one sharp (F#), and a common time signature. The melody is composed of eighth and sixteenth notes. The second staff features a repeat sign (double bar line with two dots) in the middle. The third staff concludes the piece with a double bar line and repeat dots.

## The Peasants' Dance

*Suth.p3no5*

Musical score for 'The Peasants' Dance' in G major and 6/8 time. The score consists of four staves of music. The first staff begins with a treble clef, a key signature of one sharp (F#), and a 6/8 time signature. The melody is composed of eighth and sixteenth notes. Each of the four staves concludes with a double bar line and repeat dots.

# The Nose Gay

*Suth.p3no6*

Musical score for 'The Nose Gay' in G major and 6/8 time. It consists of three staves of music. The first staff begins with a treble clef, a key signature of one sharp (F#), and a 6/8 time signature. The melody is composed of eighth and sixteenth notes. The second staff features a repeat sign with first and second endings. The third staff concludes the piece with a double bar line and repeat dots.

# Duncan Davidson

*Suth.p4no7*

Musical score for 'Duncan Davidson' in D major and 2/4 time. It consists of three staves of music. The first staff begins with a treble clef, a key signature of two sharps (F# and C#), and a 2/4 time signature. The melody is primarily composed of quarter and eighth notes. The second staff includes a repeat sign with first and second endings. The third staff concludes the piece with a double bar line and repeat dots.

# Nancy Dawson

*Suth.p4no8*

Musical score for 'Nancy Dawson' in G major and 6/8 time. It consists of three staves of music. The first staff begins with a treble clef, a key signature of one sharp (F#), and a 6/8 time signature. The melody is composed of quarter and eighth notes. The second staff features a repeat sign with first and second endings. The third staff concludes the piece with a double bar line and repeat dots.

# Balty Horah

*Suth.p5no9*

Musical score for 'Balty Horah' in G major and 9/8 time. The score consists of six staves of music. The first staff begins with a treble clef, a key signature of one sharp (F#), and a 9/8 time signature. The melody is characterized by eighth-note patterns and a final double bar line with repeat dots. The subsequent five staves continue the piece with similar rhythmic and melodic motifs, each ending with a double bar line and repeat dots.

# Trip it Up Stairs

*Suth.p6np10*

Musical score for 'Trip it Up Stairs' in G major and 6/8 time. The score consists of three staves of music. The first staff begins with a treble clef, a key signature of one sharp (F#), and a 6/8 time signature. The melody features a mix of quarter and eighth notes. The second staff includes a repeat sign (double bar line with two dots) in the middle. The third staff concludes the piece with a double bar line and repeat dots.

## Fanny's Fancy

*Suth.p6no11*

Musical score for 'Fanny's Fancy' in G major (one sharp) and 2/4 time. The piece consists of three staves of music. The first staff begins with a treble clef, a key signature of one sharp (F#), and a 2/4 time signature. The melody is composed of eighth and quarter notes, ending with a double bar line and repeat dots. The second and third staves continue the melody with similar rhythmic patterns and note values, also concluding with double bar lines and repeat dots.

## The Witches

*Suth.p7no12*

Musical score for 'The Witches' in G major (one sharp) and 6/8 time. The piece consists of four staves of music. The first staff begins with a treble clef, a key signature of one sharp (F#), and a 6/8 time signature. The melody is composed of eighth and quarter notes, ending with a double bar line and repeat dots. The second, third, and fourth staves continue the melody with similar rhythmic patterns and note values, each concluding with double bar lines and repeat dots.

The Boys of the Mall

*Suthp7no13*

Musical score for 'The Boys of the Mall' in G major and 6/8 time. The score consists of four staves of music. The first staff begins with a treble clef, a key signature of one sharp (F#), and a 6/8 time signature. The melody is written in a simple, rhythmic style with eighth and quarter notes. The second and fourth staves end with repeat signs and double bar lines.

Boys avoid of all care

*Suth.p8no14*

Musical score for 'Boys avoid of all care' in G major and 6/8 time. The score consists of four staves of music. The first staff begins with a treble clef, a key signature of one sharp (F#), and a 6/8 time signature. The melody is written in a simple, rhythmic style with eighth and quarter notes. The second and fourth staves end with repeat signs and double bar lines.

# Peggy Kelly

*Suth.p8no15*



Musical score for 'Peggy Kelly' in G major and 2/4 time. It consists of three staves of music. The first staff begins with a treble clef, a key signature of one sharp (F#), and a 2/4 time signature. The melody is composed of eighth and quarter notes. The second staff features a repeat sign at the beginning. The third staff concludes with a double bar line and repeat dots.

# The Flowers of May

*Suth.p9no16*



Musical score for 'The Flowers of May' in G major and 6/8 time. It consists of five staves of music. The first staff begins with a treble clef, a key signature of one sharp (F#), and a 6/8 time signature. The melody is primarily composed of eighth notes. The second and third staves continue the melody. The fourth staff is marked with a '1' and a first ending bracket. The fifth staff is marked with a '2' and a second ending bracket. Both first and second endings conclude with a double bar line and repeat dots.

# Protestant Boy's

*Suth.p9no17*



Musical score for 'Protestant Boy's' in G major and 6/8 time. It consists of two staves of music. The first staff begins with a treble clef, a key signature of one sharp (F#), and a 6/8 time signature. The melody is composed of eighth and quarter notes. The second staff continues the melody and concludes with a double bar line and repeat dots.

## The Cock and the Hen

*Suth.p10no18*

Musical notation for 'The Cock and the Hen'. The piece is in G major and 9/8 time. It consists of two staves. The first staff begins with a treble clef, a key signature of one sharp (F#), and a 9/8 time signature. The melody is characterized by eighth-note patterns. The second staff continues the melody with similar rhythmic patterns. Both staves end with a double bar line and repeat dots.

## Barm

*Suth.p10no19*

Musical notation for 'Barm'. The piece is in G major and 6/8 time. It consists of two staves. The first staff begins with a treble clef, a key signature of one sharp (F#), and a 6/8 time signature. The melody features a mix of eighth and quarter notes. The second staff continues the melody with similar rhythmic patterns. Both staves end with a double bar line and repeat dots.

## Round About the Haystack

*Suth.p11no20*

Musical notation for 'Round About the Haystack'. The piece is in G major and common time (C). It consists of three staves. The first staff begins with a treble clef, a key signature of one sharp (F#), and a common time signature. The melody is composed of quarter and eighth notes. The second and third staves continue the melody with similar rhythmic patterns. All three staves end with a double bar line and repeat dots.



Manchester Boy's

*Suth.p11no21*



Musical notation for Manchester Boy's, consisting of three staves in treble clef, key of D major, and common time. The melody is written on the top staff, and the accompaniment is split between the middle and bottom staves. The piece concludes with a double bar line and repeat dots.

The Bucks of Kilkenny

*Suth.p12no22*



Musical notation for The Bucks of Kilkenny, consisting of two staves in treble clef, key of D major, and 9/8 time. The melody is written on the top staff, and the accompaniment is on the bottom staff. The piece concludes with a double bar line and repeat dots.

Lady Harriet Hope's Reell

*Suth.p12no23*



Musical notation for Lady Harriet Hope's Reell, consisting of three staves in treble clef, key of D major, and 2/4 time. The melody is written on the top staff, and the accompaniment is split between the middle and bottom staves. The piece concludes with a double bar line and repeat dots.

# Jackson's Morning Brush

*Suth.p13no24*

Musical score for Jackson's Morning Brush, consisting of six staves of music in treble clef, key of D major (two sharps), and 6/8 time signature. The first staff begins with a single eighth note followed by a series of eighth and sixteenth notes. The second staff continues the melody with similar rhythmic patterns. The third and fourth staves feature more complex rhythmic figures, including sixteenth-note runs. The fifth and sixth staves conclude the piece with a final melodic phrase and a double bar line.

# Brown's Reell

*Suthp14no25*

Musical score for Brown's Reell, consisting of three staves of music in treble clef, key of D major (two sharps), and common time (C). The first staff starts with a half note followed by eighth and sixteenth notes. The second and third staves continue the melody with intricate rhythmic patterns, including sixteenth-note runs and triplet-like figures. The piece ends with a double bar line.

### Robertson's Rant

*Suth.p14no26*

Two staves of musical notation for Robertson's Rant. The first staff begins with a treble clef, a key signature of one sharp (F#), and a common time signature (C). The melody consists of eighth and sixteenth notes, ending with a repeat sign. The second staff continues the melody with similar rhythmic patterns.

### Lick the Ladle Sandie

*Suth.p15no27*

Four staves of musical notation for Lick the Ladle Sandie. The first staff begins with a treble clef, a common time signature (C), and a key signature of one sharp (F#). The melody is composed of eighth and sixteenth notes, ending with a repeat sign. The subsequent three staves continue the piece with various rhythmic figures and melodic lines.

### Miss McDonald's Reell

*Suth.p15no28*

Two staves of musical notation for Miss McDonald's Reell. The first staff begins with a treble clef, a key signature of one sharp (F#), and a common time signature (C). The melody features eighth and sixteenth notes, ending with a repeat sign. The second staff continues the melody with similar rhythmic patterns.

## The King of Denmark's Jigg

*Suth.p16no29*

Musical score for 'The King of Denmark's Jigg' in G major, common time (C). The score consists of four staves of music. The first staff begins with a treble clef, a key signature of one sharp (F#), and a common time signature (C). The melody is written in a single line. The second staff continues the melody. The third staff continues the melody. The fourth staff continues the melody and ends with a double bar line and repeat dots. The music is a lively jig with a mix of eighth and sixteenth notes.

## Catches and Gleees

*Suth.p16no30*

Musical score for 'Catches and Gleees' in G major, 6/8 time. The score consists of two staves of music. The first staff begins with a treble clef, a key signature of one sharp (F#), and a 6/8 time signature. The melody is written in a single line. The second staff continues the melody. The music is a lively jig with a mix of eighth and sixteenth notes.

## Chester Castle

*Suth.p17no31*

Musical score for 'Chester Castle' in G major, common time (C). The score consists of four staves of music. The first staff begins with a treble clef, a key signature of one sharp (F#), and a common time signature (C). The melody is written in a single line. The second staff continues the melody. The third staff continues the melody. The fourth staff continues the melody and ends with a double bar line and repeat dots. The music is a lively jig with a mix of eighth and sixteenth notes.

## The Magazine

*Suth.p17no32*

Musical score for 'The Magazine' in G major and 6/8 time. It consists of two staves. The first staff begins with a treble clef, a key signature of one sharp (F#), and a 6/8 time signature. The melody features a sequence of eighth notes: G4, A4, B4, C5, B4, A4, G4, F#4, E4, D4. The second staff continues the melody with eighth notes: C4, B3, A3, G3, F#3, E3, D3, C3, B2, A2, G2, F#2, E2, D2. Both staves end with a double bar line and repeat dots.

## Number Three

*Suth.p18no33*

Musical score for 'Number Three' in G major and common time (C). It consists of four staves. The first staff begins with a treble clef, a key signature of one sharp (F#), and a common time signature. The melody starts with a dotted quarter note G4, followed by eighth notes A4, B4, C5, B4, A4, G4, F#4, E4, D4. The second staff continues with eighth notes C4, B3, A3, G3, F#3, E3, D3, C3, B2, A2, G2, F#2, E2, D2. The third staff features a continuous eighth-note pattern: G4, A4, B4, C5, B4, A4, G4, F#4, E4, D4, C4, B3, A3, G3, F#3, E3, D3, C3, B2, A2, G2, F#2, E2, D2. The fourth staff concludes the piece with eighth notes: C4, B3, A3, G3, F#3, E3, D3, C3, B2, A2, G2, F#2, E2, D2. All staves end with a double bar line and repeat dots.

## Merrily Kys'd the Quaker

*Suth.p18no34*

Musical score for 'Merrily Kys'd the Quaker' in G major and 6/8 time. It consists of three staves. The first staff begins with a treble clef, a key signature of one sharp (F#), and a 6/8 time signature. The melody consists of eighth notes: G4, A4, B4, C5, B4, A4, G4, F#4, E4, D4. The second staff continues with eighth notes: C4, B3, A3, G3, F#3, E3, D3, C3, B2, A2, G2, F#2, E2, D2. The third staff concludes the piece with eighth notes: C4, B3, A3, G3, F#3, E3, D3, C3, B2, A2, G2, F#2, E2, D2. All staves end with a double bar line and repeat dots.

## The Chorus Jigg

*Suth.p19no35*

Musical score for 'The Chorus Jigg' in G major and 6/8 time. The score consists of seven staves of music. The first staff begins with a treble clef, a key signature of one sharp (F#), and a 6/8 time signature. The melody is characterized by eighth and sixteenth notes, with a dotted quarter note at the start. The second staff contains a repeat sign with first and second endings. The third staff continues the melody with another repeat sign. The fourth staff features a more complex rhythmic pattern with sixteenth notes. The fifth staff continues with eighth notes and a repeat sign. The sixth staff has a similar pattern to the fifth. The seventh staff concludes the piece with a final cadence and repeat sign.

## The Soldier's Joy – a Hornpipe

*Suth.p21no37*

Musical score for 'The Soldier's Joy – a Hornpipe' in G major and common time (C). The score consists of four staves of music. The first staff begins with a treble clef, a key signature of one sharp (F#), and a common time signature. The melody is primarily composed of quarter and eighth notes. The second staff contains a repeat sign with first and second endings. The third staff continues the melody with eighth notes. The fourth staff concludes the piece with a final cadence and repeat sign.

# The Black Joke

*Suth.p23no41*

Musical score for 'The Black Joke' in G major and 6/8 time. The score consists of three staves of music. The first staff begins with a treble clef, a key signature of one sharp (F#), and a 6/8 time signature. The melody is composed of eighth and sixteenth notes. The second staff features a repeat sign with first and second endings. The third staff concludes the piece with a double bar line and repeat dots.

# Stonney Batter

*Suth.p24no45*

Musical score for 'Stonney Batter' in G major and 6/8 time. The score consists of two staves of music. The first staff begins with a treble clef, a key signature of one sharp (F#), and a 6/8 time signature. The melody is composed of eighth and sixteenth notes. The second staff concludes the piece with a double bar line and repeat dots.

## The Devil's Dream

*Suth.p25no46*

Musical score for 'The Devil's Dream' in G major (one sharp) and common time. The piece consists of six staves of music. The first staff begins with a treble clef, a key signature of one sharp (F#), and a common time signature (C). The melody is characterized by a series of eighth and sixteenth notes, creating a rhythmic and melodic pattern. The score concludes with a double bar line and repeat dots.

## Black's Horn Pipe

*Suth.p28no51*

Musical score for 'Black's Horn Pipe' in G major (one sharp) and common time. The piece consists of four staves of music. The first staff begins with a treble clef, a key signature of one sharp (F#), and a common time signature (C). The melody features a mix of eighth and sixteenth notes, with some triplet-like patterns. The score concludes with a double bar line and repeat dots.



# Jack's Horn Pipe

*Suth.p29no53*



Musical score for Jack's Horn Pipe, consisting of five staves of music in treble clef, key of D major (two sharps), and common time (C). The piece features a mix of eighth and sixteenth notes, with a repeat sign in the second staff. The melody is lively and characteristic of a horn pipe.

# The Philosopher's Jigg

*Suth.p31no56*



Musical score for The Philosopher's Jigg, consisting of three staves of music in treble clef, key of D major (two sharps), and 6/8 time. The piece features a mix of eighth and sixteenth notes, with a repeat sign in the second staff. The melody is lively and characteristic of a jig.

The Maid of the Mill

*Suth.p32no58*

Musical score for 'The Maid of the Mill' in G major, 2/4 time. The score consists of four staves of music. The first staff begins with a treble clef, a key signature of one sharp (F#), and a 2/4 time signature. The melody is characterized by a series of eighth-note patterns, often beamed together in groups of four or six. The piece concludes with a double bar line and repeat dots.

Fishers favourit

*Suth.p33no60*

Musical score for 'Fishers favourit' in G major, common time (C). The score consists of four staves of music. The first staff begins with a treble clef, a key signature of one sharp (F#), and a common time signature. The melody features a mix of quarter and eighth notes, with several triplet markings (indicated by a '3' below the notes) in the later measures. The piece concludes with a double bar line and repeat dots.

Jack Latone – a hornpipe

*Suth.p34no61*

Musical score for 'Jack Latone – a hornpipe' in G major (one sharp) and common time. The piece consists of three staves of music. The first two staves feature a melody with eighth and sixteenth notes, while the third staff provides a rhythmic accompaniment with eighth and sixteenth notes. The piece concludes with a double bar line and repeat dots.

McNeil's Hornpipe

*Suth.p36no65*

Musical score for 'McNeil's Hornpipe' in D major (two sharps) and common time. The piece consists of four staves of music. The first staff has a melody with quarter and eighth notes. The second and third staves continue the melody with eighth and sixteenth notes. The fourth staff features a rhythmic accompaniment with eighth notes and includes four triplet markings (indicated by a '3' below the notes). The piece concludes with a double bar line and repeat dots.

Mcredy's Hornpipe

*Suth.p37no68*

Musical score for 'Mcredy's Hornpipe' in G major (one sharp) and common time. The piece consists of three staves of music. The first two staves feature a melody with eighth and sixteenth notes, and the third staff provides a rhythmic accompaniment with eighth and sixteenth notes. The piece concludes with a double bar line and repeat dots.

# La Cotillion

*Suth.p38no70*



Musical score for 'La Cotillion' in G major and 6/8 time. The score consists of three staves of music. The first staff begins with a treble clef, a key signature of one sharp (F#), and a 6/8 time signature. The melody is composed of eighth and quarter notes. The second staff contains a repeat sign followed by a double bar line and a repeat sign. The third staff concludes the piece with a double bar line and repeat dots.

# Donal Magrenes A Hornpipe

*Suth.p40no73*



Musical score for 'Donal Magrenes A Hornpipe' in G major and 6/8 time. The score consists of six staves of music. The first staff begins with a treble clef, a key signature of one sharp (F#), and a 6/8 time signature. The melody is composed of eighth and quarter notes. The second staff contains a repeat sign followed by a double bar line and a repeat sign. The third staff concludes the piece with a double bar line and repeat dots. The fourth, fifth, and sixth staves continue the melody with various rhythmic patterns and repeat signs.

## The Lilley

*Suth.p41no74*

Musical score for 'The Lilley' in G major and common time. It consists of three staves. The first staff is the melody, the second is the bass line, and the third is a treble accompaniment. The piece concludes with a double bar line and repeat dots.

## The Hare in the Corn

*Suth.p41no75*

Musical score for 'The Hare in the Corn' in G major and 6/8 time. It consists of three staves. The first staff is the melody, the second is the bass line, and the third is a treble accompaniment. The piece concludes with a double bar line and repeat dots.

## Cox's Maggot

*Suth.p42no76*

Musical score for 'Cox's Maggot' in G major and 6/8 time. It consists of three staves. The first staff is the melody, the second is the bass line, and the third is a treble accompaniment. The piece concludes with a double bar line and repeat dots.

Bonny lad will you marry

*Suth.p42no77*

Musical score for 'Bonny lad will you marry' in G major and 6/8 time. The score consists of four staves of music. The first staff begins with a treble clef, a key signature of one sharp (F#), and a 6/8 time signature. The melody is written in a single line. The second and third staves contain repeat signs (double bar lines with dots) indicating repeated sections of the melody. The fourth staff concludes the piece with a double bar line and repeat dots.

Caisemake

*Suth.p43no78*

Musical score for 'Caisemake' in G major and 6/8 time. The score consists of seven staves of music. The first staff begins with a treble clef, a key signature of one sharp (F#), and a 6/8 time signature. The melody is written in a single line. The second and third staves contain repeat signs (double bar lines with dots). The fourth staff is marked with 'DC' above the staff. The fifth and sixth staves also contain repeat signs. The seventh staff concludes the piece with a double bar line and repeat dots.

## Harlequin on the Parlor

*Suth.p44no80*

Musical score for 'Harlequin on the Parlor' in G major and 6/8 time. The score consists of three staves. The first staff contains the main melody. The second and third staves provide accompaniment with a rhythmic pattern of eighth notes. The piece concludes with a double bar line and repeat dots.

## The Duke of Glochester's Hornpipe

*Suth.p45no81*

Musical score for 'The Duke of Glochester's Hornpipe' in D major and common time. The score consists of four staves. The first staff contains the main melody. The second and third staves provide accompaniment with a rhythmic pattern of eighth notes. The fourth staff continues the accompaniment. The piece concludes with a double bar line and repeat dots.

## Cubits Recruiting Sergeant

*Suth.p46no83*

Musical score for 'Cubits Recruiting Sergeant' in G major and common time. The score consists of three staves. The first staff contains the main melody. The second and third staves provide accompaniment with a rhythmic pattern of eighth notes. The piece concludes with a double bar line and repeat dots.

# Johnny is My Darling

*Suth.p47no86*

Musical notation for the piece 'Johnny is My Darling'. It consists of three staves of music in treble clef, key of D major (one sharp), and 6/8 time signature. The melody is written on the top staff, and the accompaniment is on the bottom two staves. The piece concludes with a double bar line and repeat dots.

# I have a wife of My Own

*Suth.p49no89*

Musical notation for the piece 'I have a wife of My Own'. It consists of three staves of music in treble clef, key of D major (one sharp), and 9/8 time signature. The melody is written on the top staff, and the accompaniment is on the bottom two staves. The piece concludes with a double bar line and repeat dots.

# Fairly shot of her

*Suth.p52no96*

Musical notation for the piece 'Fairly shot of her'. It consists of three staves of music in treble clef, key of D major (one sharp), and 6/8 time signature. The melody is written on the top staff, and the accompaniment is on the bottom two staves. The piece concludes with a double bar line and repeat dots.



Nameless

*Suth.p53no97*

Musical score for 'Nameless' in G major, 6/8 time. The score consists of three staves. The first staff begins with a treble clef, a key signature of one sharp (F#), and a 6/8 time signature. The melody is characterized by eighth and sixteenth notes, with some triplet-like patterns. The second staff contains a repeat sign with first and second endings. The third staff concludes the piece with a double bar line and repeat dots.

Donaldson's Rant

*Suth.p53no98*

Musical score for 'Donaldson's Rant' in G major, common time (C). The score consists of four staves. The first staff begins with a treble clef, a key signature of one sharp (F#), and a common time signature. The melody is primarily composed of quarter and eighth notes. The second and third staves feature first and second endings, indicated by bracketed lines and the numbers '1' and '2' above the notes. The piece ends with a double bar line and repeat dots.

Push about the Town

*Suth.p54no99*

Musical score for 'Push about the Town' in G major, common time (C). The score consists of two staves. The first staff begins with a treble clef, a key signature of one sharp (F#), and a common time signature. The melody is composed of quarter and eighth notes. The second staff continues the melody with similar rhythmic patterns. The piece concludes with a double bar line and repeat dots.

# The Panthaeon

*Suth.p54-5no100*

Musical score for 'The Panthaeon' in G major and 6/8 time. It consists of four staves of music. The first staff is the melody, starting with a quarter rest followed by a series of eighth and quarter notes. The second staff is a rhythmic accompaniment with eighth and sixteenth notes. The third staff continues the accompaniment with a mix of eighth and sixteenth notes. The fourth staff features a more complex accompaniment with sixteenth-note runs and eighth notes. The piece concludes with a double bar line and repeat dots.

# Sweet Willy

*Suth.p57no105*

Musical score for 'Sweet Willy' in G major and 6/8 time. It consists of two staves of music. The first staff is the melody, characterized by a steady eighth-note pattern. The second staff is the accompaniment, featuring a similar eighth-note pattern with some sixteenth-note accents. The piece ends with a double bar line and repeat dots.

# Blowzabella

*Suth.p59no114*

Musical score for 'Blowzabella' in G major and 6/8 time. It consists of two staves of music. The first staff is the melody, featuring a mix of quarter and eighth notes. The second staff is the accompaniment, with a steady eighth-note pattern. Both staves include repeat signs and repeat dots. The piece concludes with a double bar line and repeat dots.

Nameless

*Suth.p61no118*

Two staves of musical notation for the piece 'Nameless'. The music is written in treble clef with a key signature of one sharp (F#) and a time signature of 6/8. The first staff contains the first line of music, ending with a repeat sign. The second staff contains the second line of music, also ending with a repeat sign.

La Bon Ton

*Suth.p63no121*

Three staves of musical notation for the piece 'La Bon Ton'. The music is written in treble clef with a key signature of two sharps (F# and C#) and a time signature of 6/8. The first staff contains the first line of music. The second staff contains the second line of music, ending with a repeat sign. The third staff contains the third line of music, also ending with a repeat sign.

Jackson's Frolic

*Suth.p63no122*

Three staves of musical notation for the piece 'Jackson's Frolic'. The music is written in treble clef with a key signature of one sharp (F#) and a time signature of 6/8. The first staff contains the first line of music. The second staff contains the second line of music, ending with a repeat sign. The third staff contains the third line of music, also ending with a repeat sign.

# The Runaway

*Suth.p64no123*

Musical score for 'The Runaway' in G major (one sharp) and common time (C). The score consists of three staves. The first staff features a melody with eighth and sixteenth notes, including slurs and accents. The second staff provides a harmonic accompaniment with eighth and sixteenth notes. The third staff continues the accompaniment with a mix of eighth and sixteenth notes. The piece concludes with a double bar line and repeat dots.

# Shawn Trews Wiliachan

*Suth.p67no130*

Musical score for 'Shawn Trews Wiliachan' in G major (one sharp) and common time (C). The score consists of four staves. The first staff has a melody with eighth and sixteenth notes. The second staff provides a harmonic accompaniment. The third and fourth staves feature a more complex accompaniment with sixteenth-note patterns and slurs. The piece ends with a double bar line and repeat dots.

# Cameron's Got His Wife Again

*Suth.p67no131*

Musical score for 'Cameron's Got His Wife Again' in G major (one sharp) and common time (C). The score consists of two staves. The first staff contains the melody, which includes eighth and sixteenth notes with slurs. The second staff provides a harmonic accompaniment with eighth and sixteenth notes. The piece concludes with a double bar line and repeat dots.

# West's Hornpipe

*Suth.p68no132*

Musical score for West's Hornpipe, consisting of three staves of music in treble clef, key of D major (one sharp), and common time (C). The first staff contains the first eight measures. The second staff contains measures 9-16, including a repeat sign with a first ending bracket. The third staff contains measures 17-24, including a 'DC 1st time' instruction and a final double bar line.

# Warwickshire Lass

*Suth.p68no133*

Musical score for Warwickshire Lass, consisting of two staves of music in treble clef, key of D major (one sharp), and 6/8 time. The first staff contains measures 1-8. The second staff contains measures 9-16, ending with a double bar line.

# Frisky

*Suth.p69no134*

Musical score for Frisky, consisting of three staves of music in treble clef, key of D major (one sharp), and 6/8 time. The first staff contains measures 1-8. The second staff contains measures 9-16. The third staff contains measures 17-24, ending with a double bar line.

### The Little House Under the Hill

*Suth.p69no135*

Two staves of musical notation in treble clef, key of D major (one sharp), and 6/8 time. The first staff contains the main melody, and the second staff contains a rhythmic accompaniment. Both staves end with a double bar line and repeat dots.

### Cwmmillwm an irish tune

*Suth.p70no136*

Three staves of musical notation in treble clef, key of D major (one sharp), and 9/8 time. The first staff contains the main melody, the second staff contains a rhythmic accompaniment, and the third staff contains a more complex accompaniment with sixteenth notes. The first two staves end with a double bar line and repeat dots, while the third staff ends with a double bar line and repeat dots.

### Jackson's Dairy Maid

*Suth.p70no137*

Two staves of musical notation in treble clef, key of D major (one sharp), and 6/8 time. The first staff contains the main melody, and the second staff contains a rhythmic accompaniment. Both staves end with a double bar line and repeat dots.

## La Mignonett

*Suth.p72no141*

Musical score for 'La Mignonett' in G major, 6/8 time. The score consists of four staves of music. The first staff is the melody, featuring a mix of eighth and sixteenth notes with some grace notes. The second and third staves provide harmonic accompaniment with chords and moving lines. The fourth staff continues the accompaniment with a more active bass line. The piece concludes with a double bar line and repeat dots.

## Dusky Night

*Suth.p74no144*

Musical score for 'Dusky Night' in G major, 6/8 time. The score consists of three staves of music. The first staff is the melody, characterized by a steady eighth-note rhythm. The second and third staves provide harmonic accompaniment with chords and moving lines. The piece concludes with a double bar line and repeat dots.

## Cookoo's Nest

*Suth.p78*

Musical score for 'Cookoo's Nest' in G major, common time (C). The piece consists of five staves of music. The melody is characterized by a rhythmic pattern of eighth and sixteenth notes, with frequent triplets. The key signature has one sharp (F#). The score includes repeat signs with first and second endings.

## Jackson's Lake

*Suth.p81*

Musical score for 'Jackson's Lake' in G major, 6/8 time. The piece consists of three staves of music. The melody features a mix of eighth and sixteenth notes, with a steady eighth-note accompaniment. The key signature has one sharp (F#). The score includes repeat signs with first and second endings.

## Quickstep

*Suth.p84*

Musical score for 'Quickstep' in G major, 4/4 time. The piece consists of two staves of music. The melody is a simple, rhythmic line of eighth and sixteenth notes. The key signature has one sharp (F#). The score includes repeat signs with first and second endings.



# The Major

Suth.p87-8

The image displays a musical score for a piece titled "The Major" in the key of D major (one sharp) and 4/4 time. The score is written on ten staves. The first staff begins with a treble clef, a key signature of one sharp (F#), and a 4/4 time signature. The music consists of a series of eighth and sixteenth notes, often beamed together in groups. The piece features several repeat signs (double bar lines with dots) and first/second endings (double bar lines with a first ending bracket and a second ending bracket). The melody is primarily composed of eighth notes, with some sixteenth-note runs and occasional quarter notes. The overall style is that of a traditional folk or dance tune.

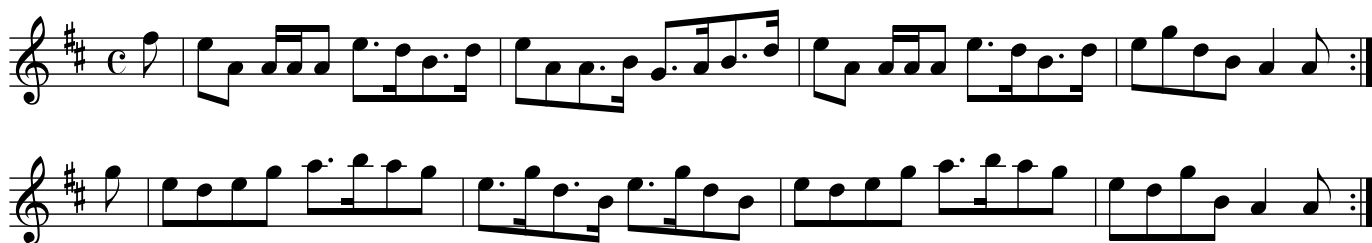
### The Houns of Cromdale, Strathspey

*Suth.p90*



### The Merry March & Wedding

*Suth.p91*



### Miss Louisa Campbell's Delight

*Suth.p93*



### Monny Musk's Reell

*Suth.p95*



I will Kiss The Wife She Bad Me – A Reell

Suth.p99

The image displays a musical score for a reel titled "I will Kiss The Wife She Bad Me – A Reell". The score is written in treble clef with a key signature of one sharp (F#) and a common time signature (C). It consists of ten staves of music. The first staff begins with a treble clef, a sharp sign, and a common time signature. The music is characterized by a fast, rhythmic melody with frequent eighth and sixteenth notes. The score includes various musical notations such as slurs, ties, and repeat signs (double bar lines with dots). The piece concludes with a double bar line and repeat dots at the end of the tenth staff.

Nameless

*Suth.p113*

Two staves of musical notation for the piece 'Nameless'. The first staff is in treble clef with a key signature of one sharp (F#) and a common time signature (C). The second staff is in bass clef with the same key signature and time signature. Both staves contain a single melodic line with various rhythmic values and repeat signs at the end.

My Own Fond Dearie

*Suth.p115*

Three staves of musical notation for the piece 'My Own Fond Dearie'. The first staff is in treble clef with a key signature of two sharps (F# and C#) and a 4/4 time signature. The second and third staves are in bass clef with the same key signature and time signature. The notation includes a variety of rhythmic patterns, including eighth and sixteenth notes, and repeat signs.

A Hornpipe

*Suth.p116*

Three staves of musical notation for the piece 'A Hornpipe'. The first staff is in treble clef with a key signature of two sharps (F# and C#) and a common time signature (C). The second and third staves are in bass clef with the same key signature and time signature. The notation features a mix of eighth and sixteenth notes, with repeat signs at the end of the first and third staves.

No 1: Minuett La Cour

*Suth.p118*

Musical score for No 1: Minuett La Cour, consisting of three staves of music in G major and 3/4 time. The first staff contains the main melody with repeat signs at the beginning and end. The second and third staves provide accompaniment with rhythmic patterns and chords.

(Minuet) No 2

*Suth.p119*

Musical score for (Minuet) No 2, consisting of three staves of music in G major and 3/4 time. The first staff contains the main melody with repeat signs and fermatas. The second and third staves provide accompaniment, including a triplet in the third staff.

Minuet

*Suth.p119*

Musical score for Minuet, consisting of two staves of music in G major and 3/4 time. The first staff contains the main melody with repeat signs and a double bar line. The second staff provides accompaniment.

## The Brigg of Perth

*Suth.p132*

Musical score for 'The Brigg of Perth' in G major, common time. The score consists of five staves. The first four staves contain the main melody with various rhythmic patterns and repeat signs. The fifth staff provides a bass line. The key signature is one sharp (F#).

## Colonel McBaine

*Suth.p134*

Musical score for 'Colonel McBaine' in G major, common time. The score consists of two staves. The first staff contains the main melody with repeat signs. The second staff provides a bass line. The key signature is one sharp (F#).

## Bang your Eye

*Suth.p135*

Musical score for 'Bang your Eye' in G major, 6/8 time. The score consists of two staves. The first staff contains the main melody with repeat signs. The second staff provides a bass line. The key signature is one sharp (F#).

Rambel's to Munster

*Suth.p137*



Musical score for 'Rambel's to Munster' in G major and 6/8 time. The score consists of three staves. The first staff begins with a treble clef, a key signature of one sharp (F#), and a 6/8 time signature. The melody is composed of eighth and sixteenth notes. The second staff features a repeat sign with first and second endings. The third staff concludes the piece with a double bar line and repeat dots.

Tristram Shandy

*Suth.p138*



Musical score for 'Tristram Shandy' in G major and 6/8 time. The score consists of five staves. The first staff begins with a treble clef, a key signature of one sharp (F#), and a 6/8 time signature. The melody is composed of eighth and sixteenth notes. The second staff features a repeat sign with first and second endings. The third and fourth staves contain complex rhythmic patterns with many sixteenth notes. The fifth staff concludes the piece with a double bar line and repeat dots.

# Caper Fay

*Suth.p139*



Musical score for 'Caper Fay' in G major (one sharp) and common time. The score consists of five staves of music. The first staff begins with a treble clef and a common time signature. The melody is characterized by eighth and sixteenth notes, with some triplet patterns. The second staff contains a double bar line with repeat dots, indicating a first ending. The third and fourth staves continue the melody with similar rhythmic patterns. The fifth staff concludes the piece with a final cadence.

# Lady Lamont Hope Reel

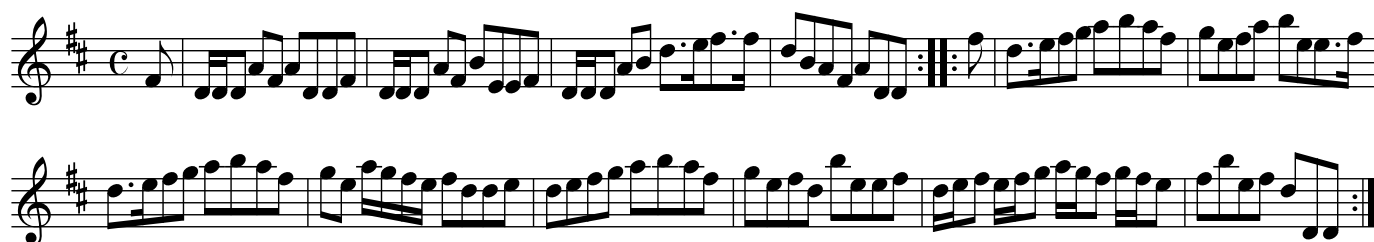
*Suth.p150*



Musical score for 'Lady Lamont Hope Reel' in G major (one sharp) and common time. The score consists of two staves of music. The first staff begins with a treble clef and a common time signature. The melody features a mix of eighth and sixteenth notes, with some triplet patterns. The second staff contains a double bar line with repeat dots, indicating a first ending.

# Pudding Maggie

*Suth.p150*



Musical score for 'Pudding Maggie' in G major (one sharp) and common time. The score consists of two staves of music. The first staff begins with a treble clef and a common time signature. The melody is composed of eighth and sixteenth notes, with some triplet patterns. The second staff contains a double bar line with repeat dots, indicating a first ending.



## The Piper's Maggott

*Suth.p151*

Musical notation for 'The Piper's Maggott' in G major, 4/4 time. The piece consists of two staves. The first staff begins with a treble clef, a key signature of one sharp (F#), and a 4/4 time signature. The melody is composed of eighth and quarter notes, ending with a repeat sign. The second staff continues the melody with similar rhythmic patterns.

## No name

*Suth.p159*

Musical notation for 'No name' in G major, 6/8 time. The piece consists of three staves. The first staff begins with a treble clef, a key signature of one sharp (F#), and a 6/8 time signature. The melody features a mix of eighth and sixteenth notes, ending with a repeat sign. The second and third staves continue the melody with intricate rhythmic patterns.

## Humours of Dublin

*Suth.p160*

Musical notation for 'Humours of Dublin' in G major, 6/8 time. The piece consists of three staves. The first staff begins with a treble clef, a key signature of one sharp (F#), and a 6/8 time signature. The melody is characterized by eighth and sixteenth notes, ending with a repeat sign. The second and third staves continue the melody with similar rhythmic patterns.

Felton's Highland Laddie

*Suth.p193-4*

The musical score for "Felton's Highland Laddie" is presented in ten staves. It is written in G major (one sharp) and 2/4 time. The piece begins with a treble clef and a key signature of one sharp (F#). The first staff contains the initial melody, followed by a repeat sign. The second staff continues the melody with a repeat sign. The third staff features a series of eighth-note patterns, also with a repeat sign. The fourth staff introduces sixteenth-note runs and includes a repeat sign. The fifth staff continues with sixteenth-note patterns and a repeat sign. The sixth staff features a more complex sixteenth-note texture with a repeat sign. The seventh staff continues the sixteenth-note patterns with a repeat sign. The eighth staff features a series of eighth-note patterns with a repeat sign. The ninth staff continues with eighth-note patterns and a repeat sign. The tenth and final staff concludes the piece with a final cadence and a repeat sign.

# The Humours of Glen

*Suth.p227*

A musical score for 'The Humours of Glen' in 4/4 time, key of D major. The score consists of six staves of music. The first staff begins with a treble clef, a key signature of one sharp (F#), and a 4/4 time signature. The melody is characterized by frequent eighth-note patterns and some sixteenth-note runs. There are repeat signs with first and second endings throughout the piece. The piece concludes with a double bar line and repeat dots.

# Light and Airy

*Suth.p255*

A musical score for 'Light and Airy' in 6/8 time, key of D major. The score consists of three staves of music. The first staff begins with a treble clef, a key signature of one sharp (F#), and a 6/8 time signature. The melody is light and features many eighth and sixteenth notes. There are repeat signs with first and second endings. The piece ends with a double bar line and repeat dots.