

# Sleep Cycle

Research collaboration

Cambridge

March 13<sup>th</sup>, 2025



# Harnessing Live Cough Data to Visualize Global Trends

Dr. Mikael Kågebäck CTO & Head of Science

 **Cough Radar™** by **Sleep Cycle®**

# Sleep Cycle

## The World's No. 1 Sleep Tracker



Sleep Tracker



Advanced Sound analysis



Population Insights

Dr. Mikael Kågebäck CTO & Head of Science





# A Global Sensor Network for Health

Dr. Mikael Kågebäck CTO & Head of Science

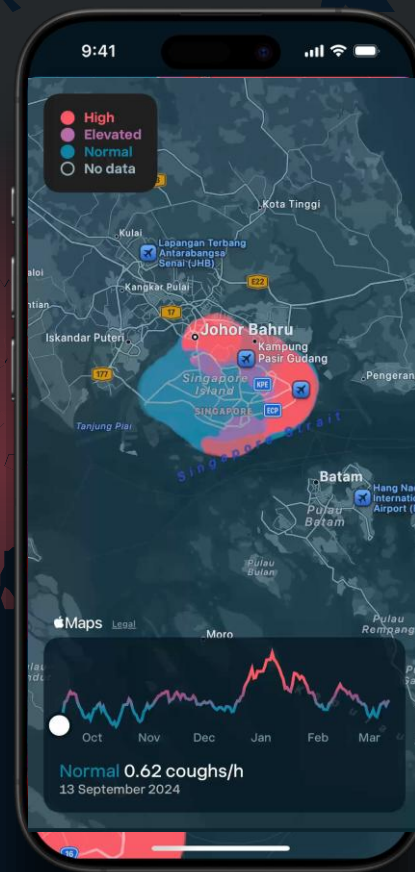
Cough Radar™ by Sleep Cycle®

PRIVACY PRESERVING

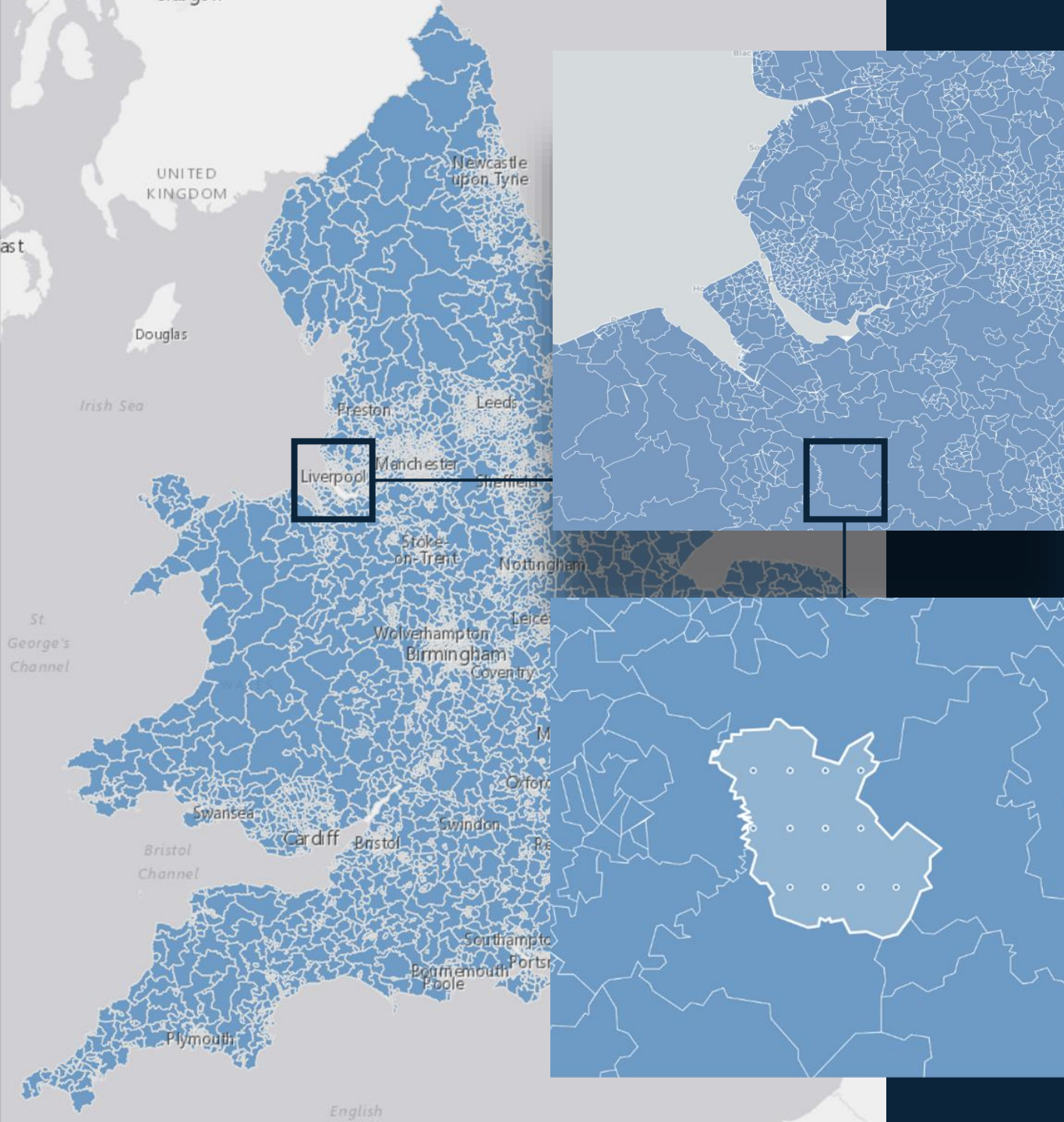
# Privacy By Design



# Cough Radar visualize global coughing trends



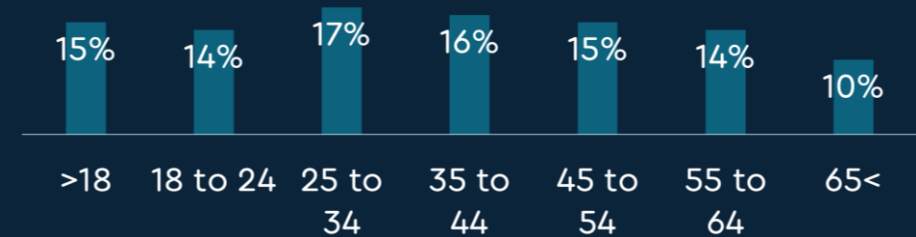
Cough Radar™ by Sleep Cycle®



WIDE COVERAGE

# Covering 80% of The UK Population

Even age group distribution



54% MALE

46% FEMALE

Cough Radar™ by Sleep Cycle®

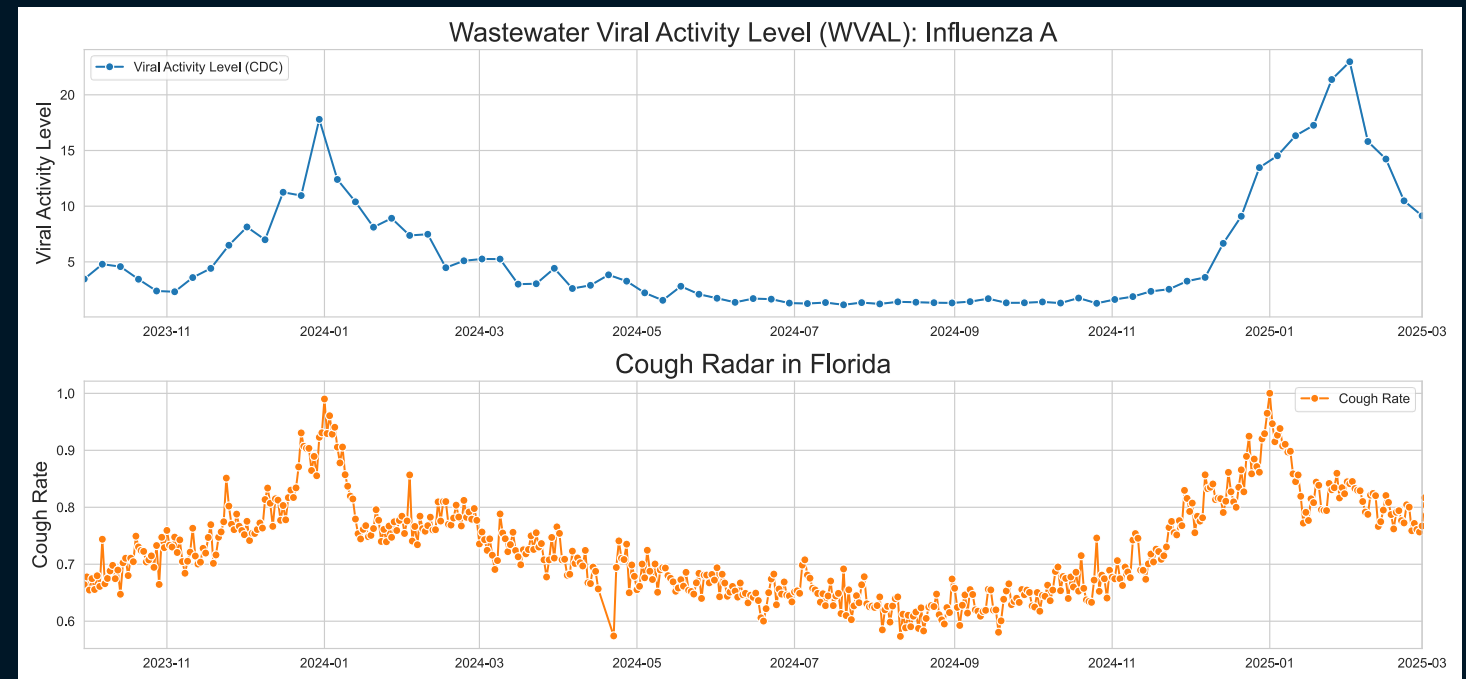
# Correlation with wastewater viral activity (Influenza A) indicates good sensitivity



Dr. Emil Carlsson

RESEARCH SCIENTIST

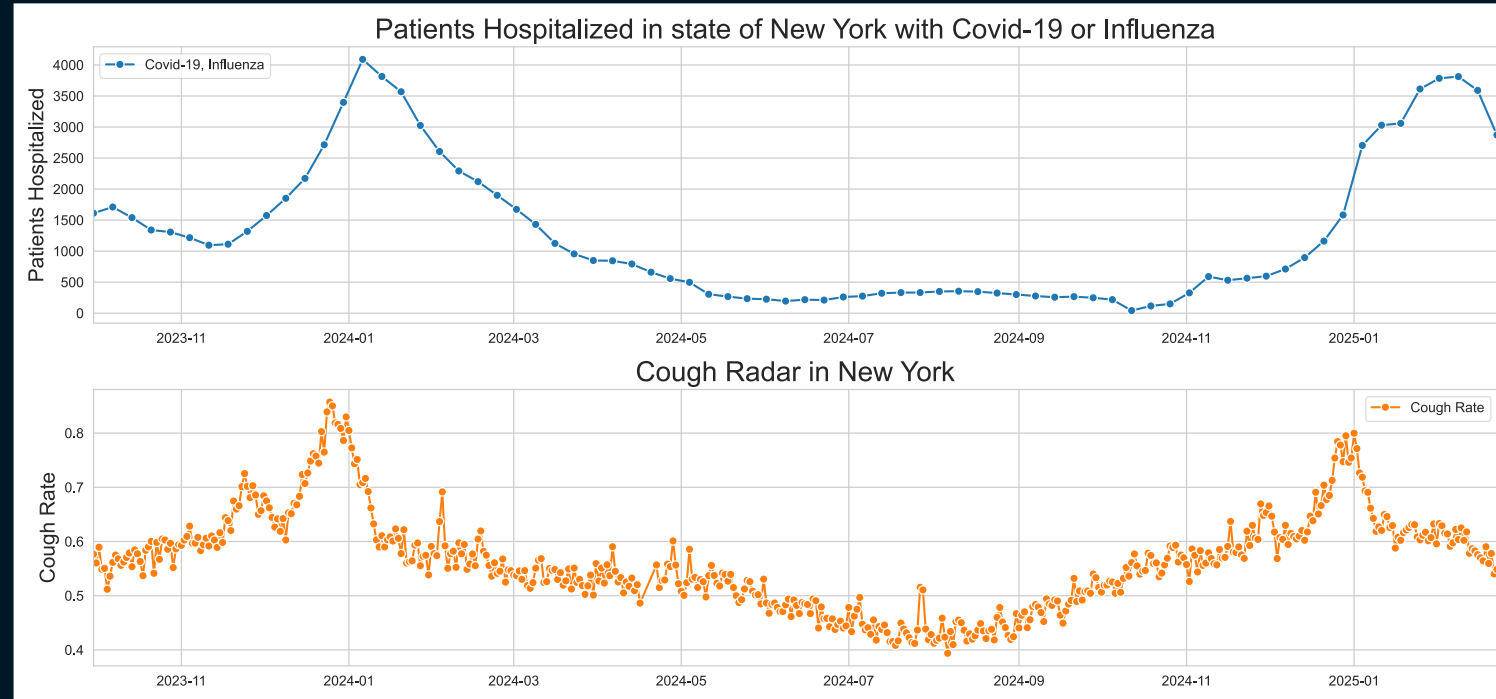
- CDC data on viral activity of Influenza A in wastewater.
- Correlation :
  - Florida: 0.82
  - Avg across states:  $0.54 \pm 0.17$
- Good sensitivity but less specific
  - Clearly seen in Feb 2025





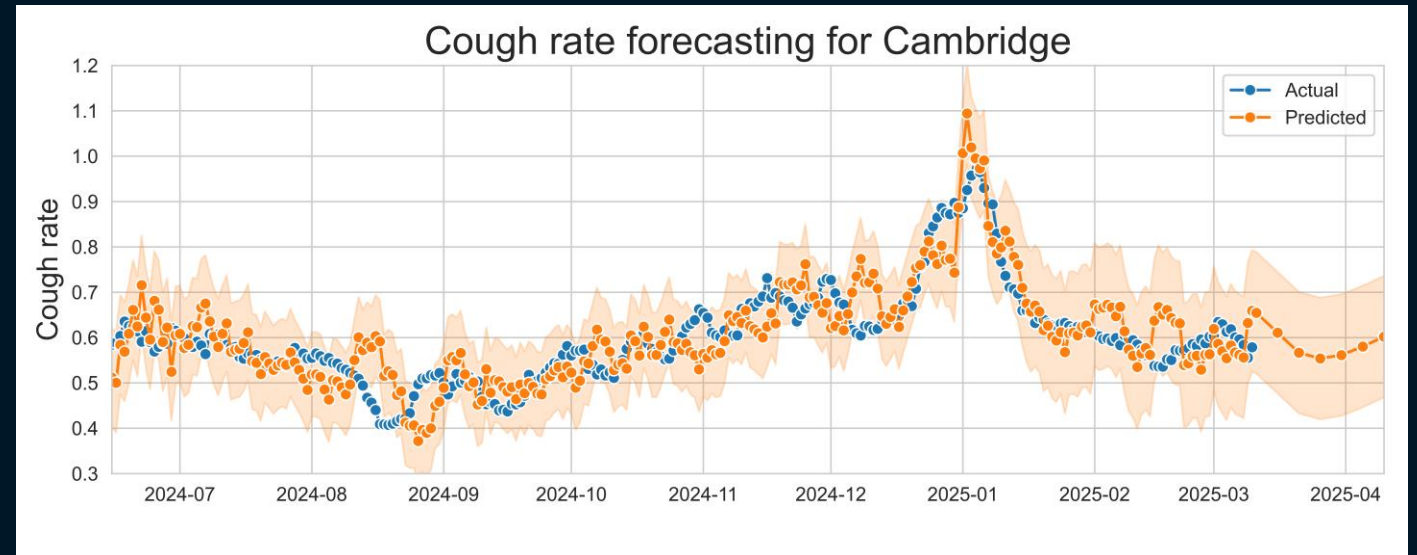
# Strong correlation with hospitalization rates **two weeks in advance**

- Analysis based on CDC data
  - Hospitalized patients per US state.
- Correlation between current cough rates and hospitalizations **in two weeks**
  - New York: 0.82
  - Avg. across states :  $0.74 \pm 0.07$ 
    - Baseline: Google flu trends: 0.53
- Google flu trends use search traffic
- Cough radar directly monitor the biological phenomena of coughing
  - Sensitivity 92,1 %, Specificity 99.9%

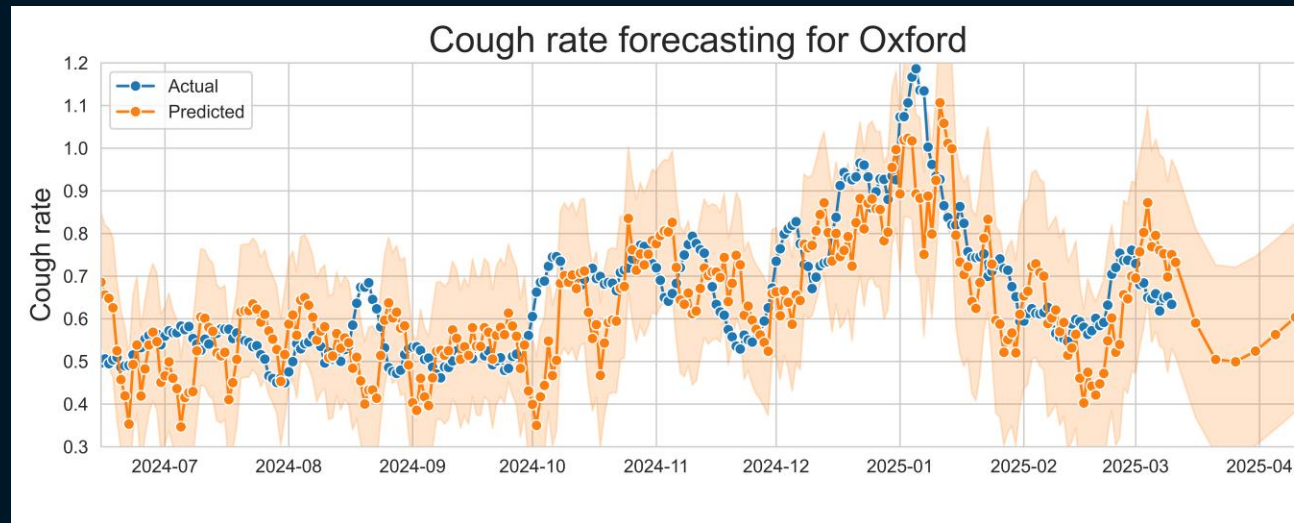
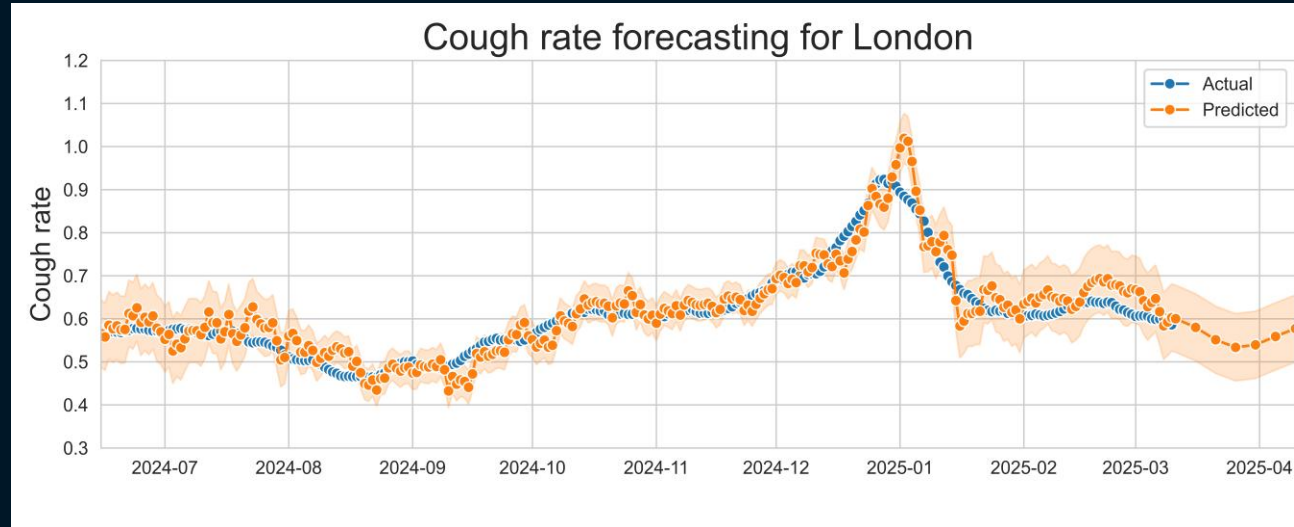


# Forecasting coughing: Baseline shows potential

- **Task:**
  - Predict cough rates 7 days into the future.
- **Model:**
  - Linear autoregressive model forecasting based on simultaneous cough rates across multiple areas.
  - 95% prediction interval
- **Results in Cambridge:**
  - MSE: 0.015
  - MAPE: 0.10
  - Higher uncertainty in Feb-Mars



# Forecasting coughing: Baseline shows potential but size matters



RIGHT NOW IN LONDON

# Live Disease Monitoring

Peak : 1.05<sub>/h</sub>

Now : 0,69<sub>/h</sub>

Elevated coughing levels

Dr. Mikael Kågebäck CTO & Head of Science





Right now in Cambridge

# Live Disease Monitoring

**Peak : 0.95<sub>/h</sub>**  
**Now : 0,58<sub>/h</sub>**

High coughing levels

Dr. Mikael Kågebäck CTO & Head of Science



# Potential future directions

- Advanced forecasting model
- Resolve different types of coughing
- Use Cough Radar to study transmission routes.

# An early warning system

## Two weeks in advance

Cough events per hour is an **early indicator** of confirmed covid cases.

CONFIRMED COVID CASES IN UNITED STATES

COUGH EVENT PER HOUR



# Get access To Cough Radar



**Dr. Mikael Kågebäck** CTO & Head of Science  
kageback@sleepcycle.com

**Cough Radar™ by Sleep Cycle®**