

Comparative Biometric System Accuracy

37. Many systems allow multiple attempts, in their normal mode of operation. The effects on error rates of a “best-of-3” decision policy are examined in this section.

—■— Face —◆— FP-chip —▲— FP-chip (2) —●— FP-optical —✕— Hand —◆— Iris —✕— Vein —■— Voice

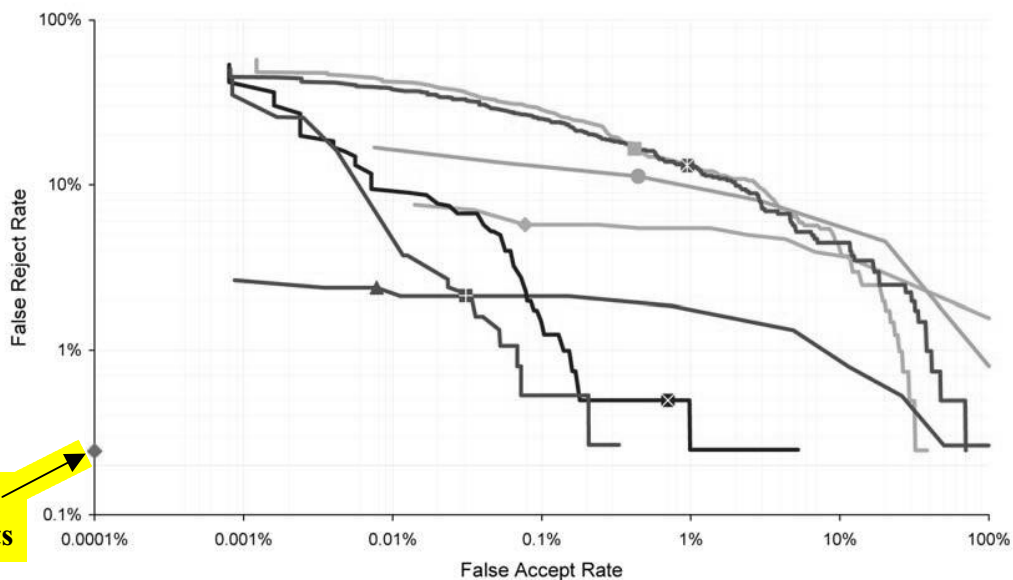


Figure 6. Detection error trade-off: Best of 3 attempts

38. The 3-attempt genuine and impostor scores are the best matching score from the 3 attempts made at the person-visit (scored against the chosen template). The resulting detection error trade-off curves are shown in Figure 6.