

Jacksono Lake

Handwritten musical score for 'Jacksono Lake'. The score consists of seven staves of music. The first staff begins with a treble clef, a key signature of one sharp (F#), and a 2/4 time signature. The music is written in a simple, rhythmic style with many eighth and sixteenth notes. A double bar line with repeat dots appears at the end of the first staff. The second staff continues the melody. The third staff features a similar rhythmic pattern. The fourth staff includes a fermata over a note and the word 'Major' written below it. The fifth staff shows a change in key signature to one flat (Bb) and a 3/8 time signature. The sixth and seventh staves continue the piece, ending with a double bar line and repeat dots.

The Same

Handwritten musical score for 'The Same'. The score consists of seven staves of music. The first staff begins with a treble clef, a key signature of one sharp (F#), and a 2/4 time signature. The music is written in a simple, rhythmic style with many eighth and sixteenth notes. A double bar line with repeat dots appears at the end of the first staff. The second staff continues the melody. The third staff features a similar rhythmic pattern. The fourth staff includes a fermata over a note. The fifth staff continues the piece. The sixth and seventh staves continue the piece, ending with a double bar line and repeat dots.

*Turners of Lohorn*

*Prose common Hunt*

*The Gardner's Daughter*

*Hot Spice ginger bread*

*Quick Step*

8/4

The Widow's Prodig

Handwritten musical score for 'The Widow's Prodig'. The score consists of six staves of music. The first staff begins with a treble clef, a key signature of one sharp (F#), and a 6/8 time signature. The music is written in a cursive, handwritten style. The second staff continues the melody. The third staff features a double bar line and a repeat sign. The fourth staff is labeled 'The Naked Boy' and continues the piece. The fifth and sixth staves complete the piece with a final double bar line.

The Fiddler

Handwritten musical score for 'The Fiddler'. The score consists of six staves of music. The first staff begins with a treble clef, a key signature of one sharp (F#), and a 6/8 time signature. The music is written in a cursive, handwritten style. The second staff continues the melody. The third staff features a double bar line and a repeat sign. The fourth and fifth staves continue the piece. The sixth staff concludes the piece with a final double bar line.

The Masque

Handwritten musical score for 'The Masque' consisting of six staves. The notation includes treble clefs, a 6/8 time signature, and various rhythmic values such as eighth and sixteenth notes. The music features a melodic line with frequent rests and a steady accompaniment. The piece concludes with a double bar line and repeat dots.

The Dance

Handwritten musical score for 'The Dance' consisting of six staves. The notation includes treble clefs, a 6/8 time signature, and rhythmic values such as eighth and sixteenth notes. The music is characterized by a more active and rhythmic melody compared to the first piece. A large black rectangular redaction covers a portion of the fifth staff. The piece ends with a double bar line and repeat dots.

this time has 22 bars in it

Handwritten musical score for 'Clare Castle'. It consists of five staves of music. The first staff begins with a treble clef, a key signature of one sharp (F#), and a 2/4 time signature. The music is written in a single melodic line. The title 'Clare Castle' is written in cursive below the second staff. The score concludes with a double bar line and repeat dots.

*The Union*

1851-90

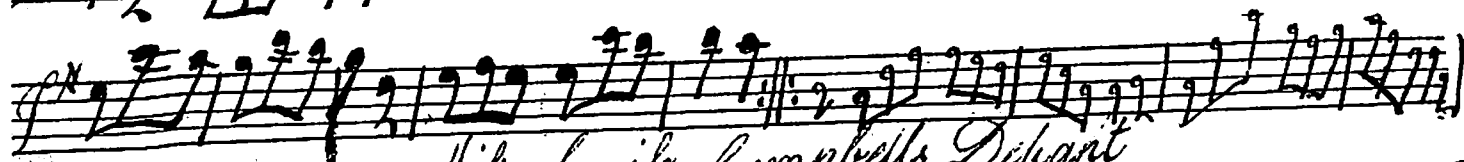
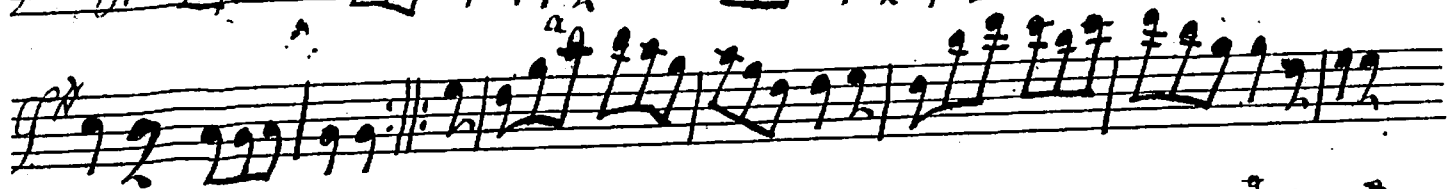
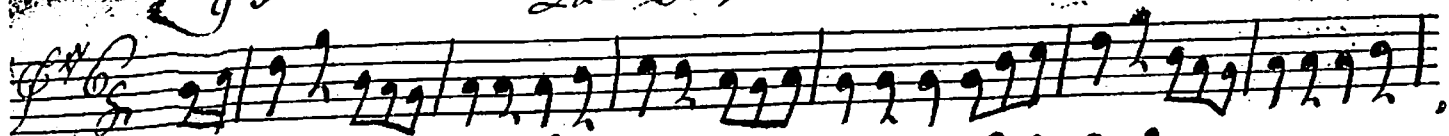
Handwritten musical score for 'The Union'. It consists of four staves of music. The first staff begins with a treble clef, a key signature of one sharp (F#), and a 2/4 time signature. The music is written in a single melodic line. The title 'The Union' is written above the first staff, and the dates '1851-90' are written to the right. The score concludes with a double bar line and repeat dots.

*The Houns of Cromdale, Strathspay*

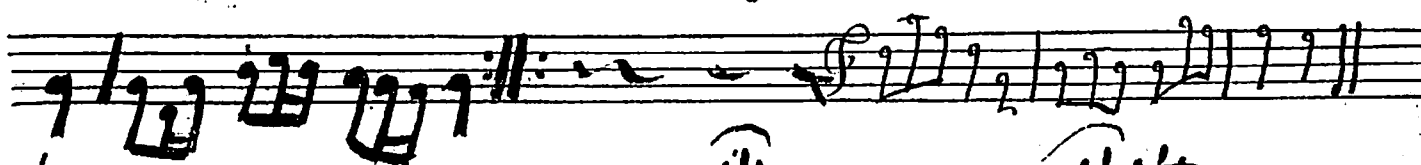
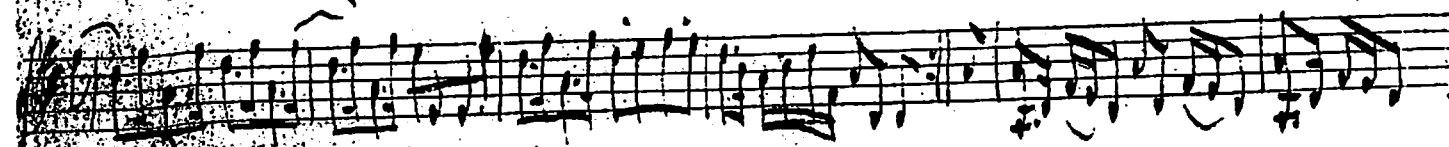
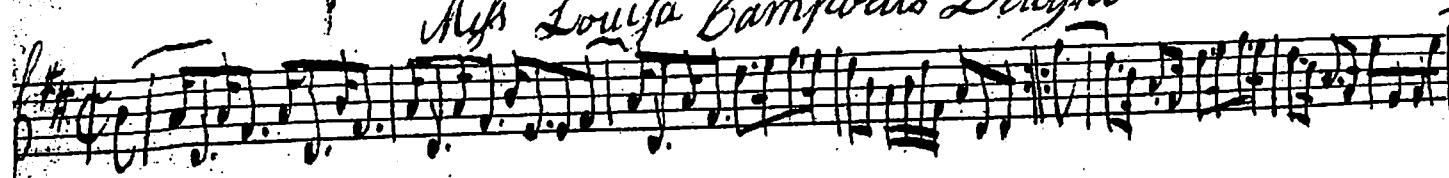
Handwritten musical score for 'The Houns of Cromdale, Strathspay'. It consists of two staves of music. The first staff begins with a treble clef, a key signature of one sharp (F#), and a 2/4 time signature. The music is written in a single melodic line. The title 'The Houns of Cromdale, Strathspay' is written above the first staff. The score concludes with a double bar line and repeat dots.



*La- Fugone*



*Miss Louisa Campbells Delight*



*Johnny Muck's Reel*

Handwritten musical score for 'Johnny Muck's Reel'. The score consists of five staves of music. The first staff begins with a treble clef, a key signature of one sharp (F#), and a 2/4 time signature. The music is written in a single melodic line. The second staff contains the title 'The Hamilton House Highlandman' written in cursive. The notation includes various rhythmic values such as eighth and sixteenth notes, and rests.

*Johnny of Badenyon*

Handwritten musical score for 'Johnny of Badenyon'. The score consists of six staves of music. The first staff begins with a treble clef, a key signature of one sharp (F#), and a 2/4 time signature. The second staff has a large black rectangular redaction covering a portion of the notation. The third staff includes the title 'The Soldier's Lad' written in cursive. The notation includes various rhythmic values such as eighth and sixteenth notes, and rests.



Handwritten musical score for page 99. The music is written on six staves in G major (one sharp) and 2/4 time. The notation includes various rhythmic values such as eighth and sixteenth notes, often beamed together in groups. There are several measures with repeat signs (double bar lines with dots) and some measures with fermatas. The ink is dark and the paper shows some signs of age and wear.

Handwritten musical score for page 100. The music continues on six staves in G major and 2/4 time. The notation is consistent with the previous page, featuring beamed eighth and sixteenth notes and various rests. The page number '100' is written in the upper right corner. The handwriting is clear and legible.

The Reel of Tulloch

101

102

103 The Caledonian Thwart By Our auld Durn

Handwritten musical score for 'The Caledonian Thwart'. The score consists of six staves of music. The first staff begins with a treble clef, a key signature of one sharp (F#), and a common time signature (C). The music is written in a style characteristic of 18th-century manuscript notation, featuring a mix of eighth and sixteenth notes, often beamed together. A section of the score is marked 'Go to Berwick Johnny'.

Hilton House Sunday 104

Handwritten musical score for 'Hilton House Sunday'. The score consists of six staves of music. It begins with a treble clef, a key signature of one sharp (F#), and a common time signature (C). The notation is similar to the first piece, with a focus on rhythmic patterns using eighth and sixteenth notes.

105

The Huss of Canons

Handwritten musical score for 'The Huss of Canons'. The score consists of six staves of music. The first staff begins with a treble clef, a key signature of one sharp (F#), and a common time signature (C). The music is written in a rhythmic, march-like style with many eighth and sixteenth notes. The second staff has the handwritten text 'Marchmont House' written below it. The score concludes with a double bar line and repeat dots.

Chant Mass Shaw 106

Handwritten musical score for 'Chant Mass Shaw'. The score consists of six staves of music. The first staff begins with a treble clef, a key signature of one sharp (F#), and a common time signature (C). The music is written in a rhythmic, march-like style with many eighth and sixteenth notes. The second staff has the handwritten text 'A Pig for a Wife' written below it. The score concludes with a double bar line and repeat dots.

Merry Dancers

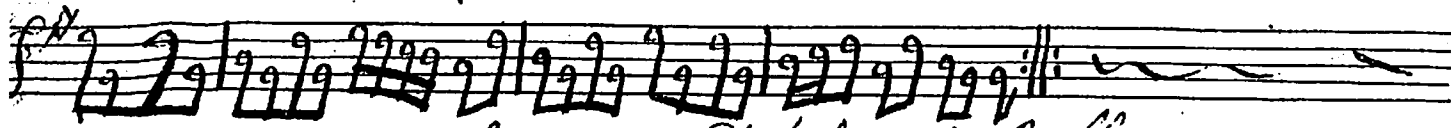
Handwritten musical score for 'Merry Dancers' in 6/8 time. The score consists of six staves of music. The first staff begins with a treble clef and a key signature of one sharp (F#). The music is characterized by a rhythmic pattern of eighth and sixteenth notes, often beamed together. A double bar line with repeat dots appears in the second staff. The piece concludes with a double bar line and a fermata in the fifth staff. Below the fourth staff, the name 'Thos. Robertson' is written in cursive.

Eight Men of Johnny Groats

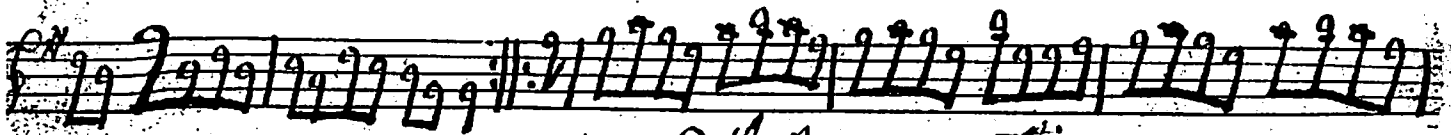
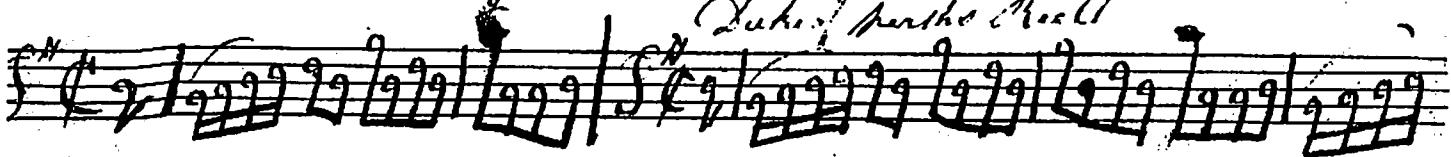
Handwritten musical score for 'Eight Men of Johnny Groats' in 6/8 time. The score consists of six staves of music. The first staff begins with a treble clef and a key signature of one sharp (F#). The music features a consistent rhythmic pattern of eighth and sixteenth notes. A double bar line with repeat dots is present in the second staff. The piece ends with a double bar line and a fermata in the fifth staff. The name 'Tommy Nettles' is written in cursive below the fourth staff.

109

I will goe no more to your town



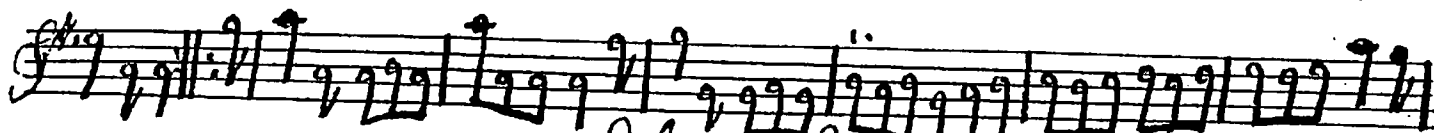
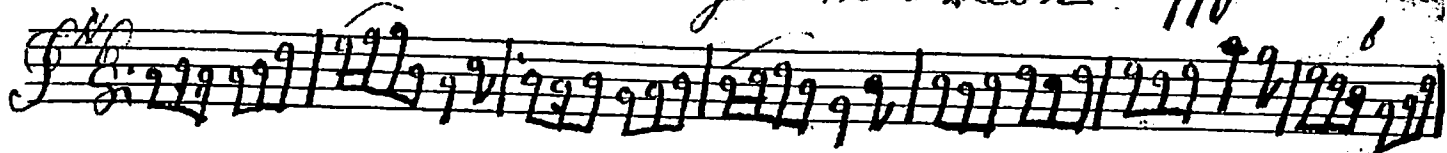
Duke's per the Reel



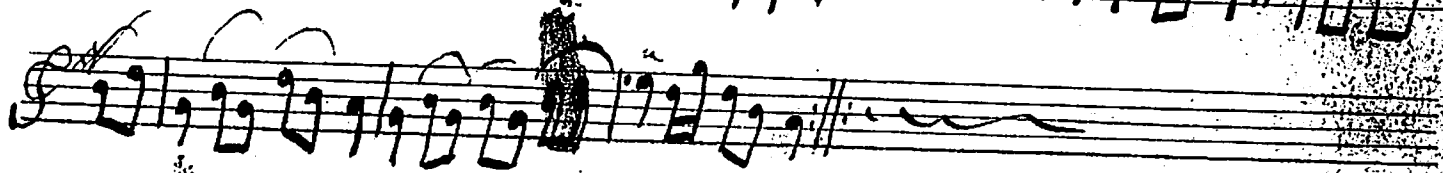
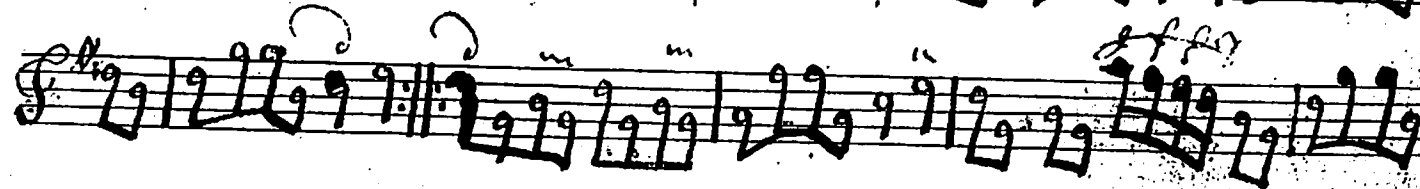
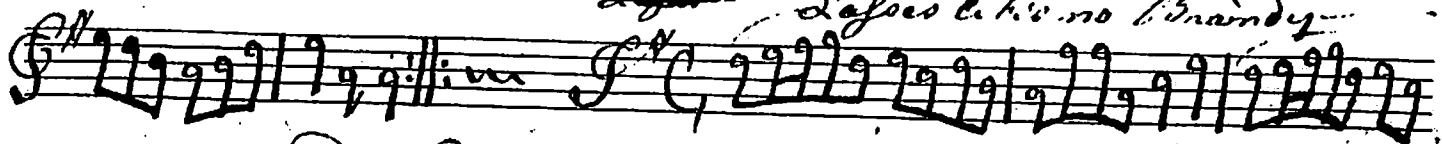
The Bonny wee thing



O as I was before the Reel 110



Lafes Lafes let's no Brandy



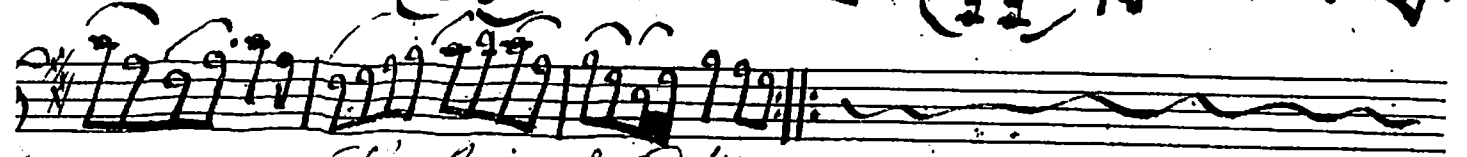
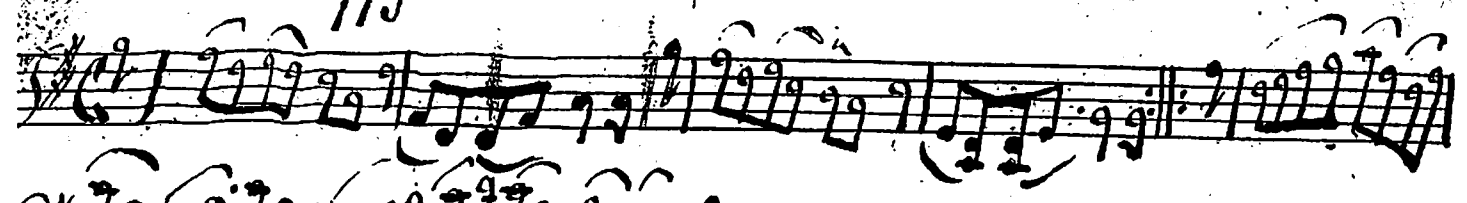
The Forest over Hill of How you Goodie

Handwritten musical score for two pieces. The first piece, 'The Forest over Hill of How you Goodie', is written on six staves in G major and 6/8 time. The second piece, 'Lochy is a Bonny Lad', is written on two staves in G major and 6/8 time. The score concludes with a large, decorative flourish.

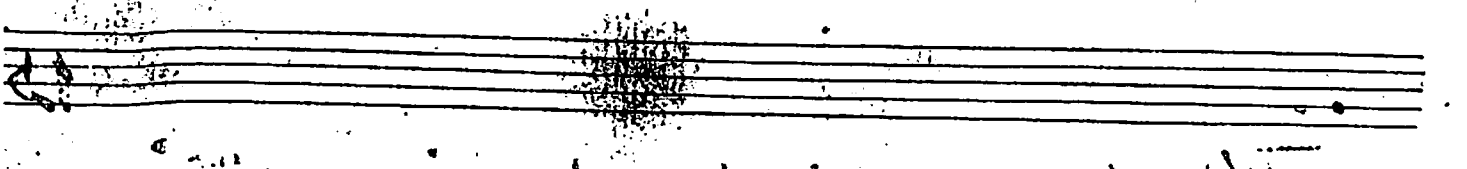
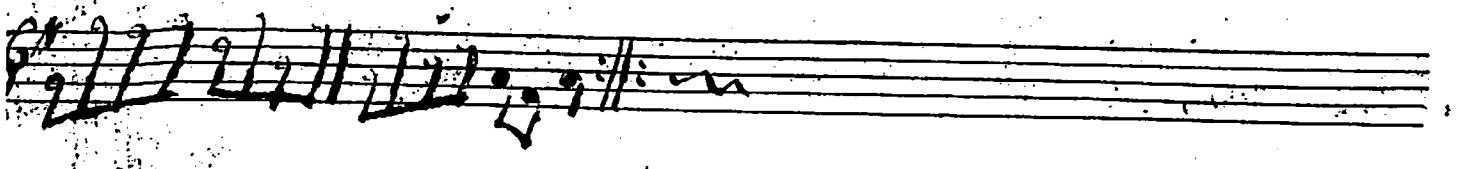
Boo the Bolster

Handwritten musical score for two pieces. The first piece, 'Boo the Bolster', is written on three staves in G major and 6/8 time, featuring first and second endings. The second piece, 'The Black Tarn', is written on three staves in G major and 6/8 time.

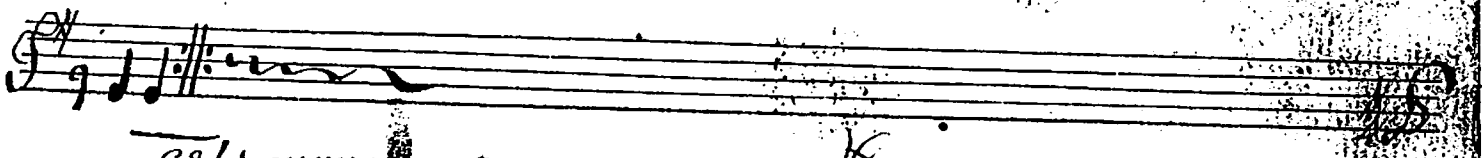
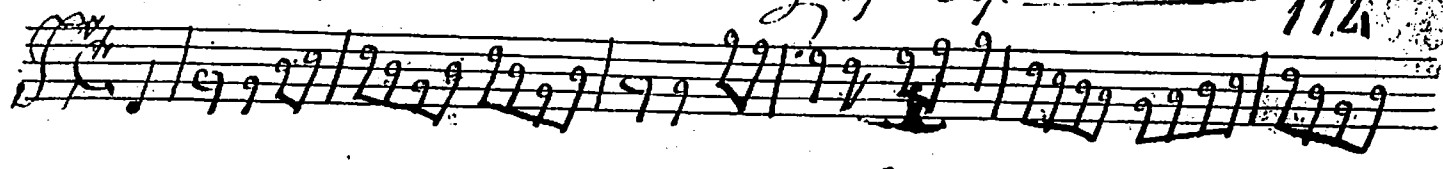
Handwritten signature and notes at the bottom of the page.



*The Rigg of Perth*



*The East Mealy of Life*



*The Great Hunt's Lord of the Hand*



Handwritten musical notation for the first system of 'Loch Groch Doo'. It consists of three staves. The top staff is in treble clef with a key signature of one sharp (F#) and a common time signature (C). The middle and bottom staves are in bass clef. The music features a complex, rhythmic melody with many sixteenth and thirty-second notes.

*My own kind name*

Handwritten musical notation for the second system of 'Loch Groch Doo'. It consists of three staves in the same key and time signature as the first system. The notation continues the complex, rhythmic melody.

Handwritten musical notation for the first system of 'Stornpipe'. It consists of three staves in treble clef with a key signature of one sharp (F#) and a common time signature (C). The first staff begins with a large bracketed section. The music is characterized by a steady, rhythmic pattern of eighth and sixteenth notes.

*Reeb*

Handwritten musical notation for the second system of 'Stornpipe'. It consists of three staves in the same key and time signature as the first system. The notation continues the rhythmic melody.

The Bottom of the Punch Bowl

117

Handwritten musical notation for 'The Bottom of the Punch Bowl'. It consists of three staves of music in treble clef with a key signature of one sharp (F#). The first staff begins with a treble clef and a key signature of one sharp. The music features a mix of eighth and sixteenth notes, with some triplets. The second and third staves continue the melody and include repeat signs.

Lady Carillo's Farney

Handwritten musical notation for 'Lady Carillo's Farney'. It consists of three staves of music in treble clef with a key signature of one sharp (F#). The first staff begins with a treble clef and a key signature of one sharp. The music features a mix of eighth and sixteenth notes, with some triplets. The second and third staves continue the melody and include repeat signs.

N.º 1 } Minuett La Cour }

N.º 118

Handwritten musical notation for 'Minuett La Cour'. It consists of six staves of music in treble clef with a key signature of one sharp (F#). The first staff begins with a treble clef and a key signature of one sharp. The music features a mix of eighth and sixteenth notes, with some triplets. The second and third staves continue the melody and include repeat signs. The fourth and fifth staves continue the melody. The sixth staff features a wavy line, possibly indicating a trill or a decorative flourish. There is a blacked-out section in the second staff.

Op. 119 No. 2

Minuet

Op. 4 & Op. 111 Hamelin's Minuet Op. 126

Same Minuet