

112. Miss Lundies Minute

Slow $\frac{3}{4}$

Handwritten musical notation for 'Miss Lundies Minute'. It consists of three staves. The first staff begins with a treble clef, a key signature of one sharp (F#), and a 3/4 time signature. The tempo marking 'Slow' is written above the first staff. The music is written in a cursive hand with various note values, rests, and bar lines.

113. Miss Gaytons Hornpipe

Handwritten musical notation for 'Miss Gaytons Hornpipe'. It consists of two staves. The first staff begins with a treble clef, a key signature of one sharp (F#), and a common time signature (C). The music is written in a cursive hand with various note values, rests, and bar lines.

114. Ceylon Waltz

Handwritten musical notation for 'Ceylon Waltz'. It consists of two staves. The first staff begins with a treble clef, a key signature of one sharp (F#), and a 3/8 time signature. The music is written in a cursive hand with various note values, rests, and bar lines.

115. Platoon Waltz

Handwritten musical notation for 'Platoon Waltz'. It consists of two staves. The first staff begins with a treble clef, a key signature of one sharp (F#), and a 3/8 time signature. The music is written in a cursive hand with various note values, rests, and bar lines.

116

Song in the Secret Mine -

Handwritten musical notation for 'Song in the Secret Mine' on three staves. The first staff begins with a treble clef, a key signature of one sharp (F#), and a common time signature (C). The melody is written in a simple, folk-like style with various note values and rests.

A Piper Over the Meadows Straying

117

Handwritten musical notation for 'A Piper Over the Meadows Straying' on two staves. The first staff begins with a treble clef, a key signature of one sharp (F#), and a common time signature (C). The melody continues with similar folk-like characteristics.

118

For all you Ladies
now at Land -

Handwritten musical notation for 'For all you Ladies now at Land' on two staves. The first staff begins with a treble clef, a key signature of one sharp (F#), and a common time signature (C). The melody is written in a simple, folk-like style.

119

The Bonniest Lass
in a the world

Handwritten musical notation for 'The Bonniest Lass in a the world' on two staves. The first staff begins with a treble clef, a key signature of one sharp (F#), and a common time signature (C). The melody is written in a simple, folk-like style.

120

Partial handwritten musical notation for item 120, showing the beginning of a staff with a treble clef and a key signature of one sharp (F#).

121

Partial handwritten musical notation for item 121, showing the beginning of a staff with a treble clef and a key signature of one sharp (F#).

122

Partial handwritten musical notation for item 122, showing the beginning of a staff with a treble clef and a key signature of one sharp (F#).

123

Partial handwritten musical notation for item 123, showing the beginning of a staff with a treble clef and a key signature of one sharp (F#).

120. Minuet de La Cour

Handwritten musical notation for Minuet de La Cour, consisting of three staves of music in treble clef with a key signature of one sharp and a 4/4 time signature.

The Conquering Hero

121. *Bold*

Handwritten musical notation for The Conquering Hero, consisting of two staves of music in treble clef with a key signature of one sharp and a 2/4 time signature.

122. From Night to Morn

Handwritten musical notation for From Night to Morn, consisting of two staves of music in treble clef with a key signature of one sharp and a 2/4 time signature.

Gilberg

123. *Slow*

Handwritten musical notation for Gilberg, consisting of two staves of music in treble clef with a key signature of one sharp and a 2/4 time signature.

124 *The Flowers of Glasgow*

Handwritten musical notation for 'The Flowers of Glasgow' on two staves. The key signature has one sharp (F#) and the time signature is 6/8. The music features a mix of eighth and sixteenth notes with some triplets.

125 *Two Hunters Jigs*

Handwritten musical notation for 'Two Hunters Jigs' on two staves. The key signature has one sharp (F#) and the time signature is 9/8. The music is characterized by a steady eighth-note rhythm.

126 *Flowers of the Forest*

Handwritten musical notation for 'Flowers of the Forest' on two staves. The key signature has one sharp (F#) and the time signature is common time (C). The tempo marking 'Slow' is written above the first staff.

127 *Mill Mill O*

Handwritten musical notation for 'Mill Mill O' on two staves. The key signature has one sharp (F#) and the time signature is common time (C). The tempo marking 'Slow' is written above the first staff.

128

Partial handwritten musical notation for item 128, showing the beginning of a piece on two staves.

129 *Down Du*

Partial handwritten musical notation for item 129, showing the beginning of a piece on two staves.

130 *Down*

Partial handwritten musical notation for item 130, showing the beginning of a piece on two staves.

131

Partial handwritten musical notation for item 131, showing the beginning of a piece on two staves.

128. Caroline's Receipt -

Slow

Handwritten musical notation for 'Caroline's Receipt' on three staves. The first staff begins with a treble clef, a key signature of one sharp (F#), and a common time signature (C). The music is written in a cursive style with various note values and rests. The piece concludes with a double bar line and a fermata.

129. Grand Voluntary -
Quick Steps -

Handwritten musical notation for 'Grand Voluntary' on two staves. The first staff begins with a treble clef, a key signature of one sharp (F#), and a 6/8 time signature. The music is characterized by a lively, rhythmic pattern. The piece concludes with a double bar line and a fermata.

130. Lumbonaula House -

Slow

Handwritten musical notation for 'Lumbonaula House' on two staves. The first staff begins with a treble clef, a key signature of one sharp (F#), and a common time signature (C). The music is written in a cursive style. The piece concludes with a double bar line and a fermata.

O Dear what can the matter be

Handwritten musical notation for 'O Dear what can the matter be' on two staves. The first staff begins with a treble clef, a key signature of one sharp (F#), and a 6/8 time signature. The music is written in a cursive style. The piece concludes with a double bar line and a fermata.

132. Mr. G. S. Watts -

And. Fe -

Handwritten musical notation for piece 132, consisting of two staves with treble clefs and a key signature of one sharp (F#).

133. German Air *Waltz time*

Handwritten musical notation for piece 133, consisting of two staves with treble clefs and a key signature of one sharp (F#).

134. William Lamb. "The Cow Boy" - - - *slow*

Handwritten musical notation for piece 134, consisting of two staves with treble clefs and a key signature of one sharp (F#).

135. Colver's Page *a Rec.*

Handwritten musical notation for piece 135, consisting of two staves with treble clefs and a key signature of one sharp (F#).

136. Kitty O' Lynch

Handwritten musical notation for piece 136, consisting of two staves with treble clefs and a key signature of one sharp (F#).

137.

Partial handwritten musical notation for piece 137.

138.

Partial handwritten musical notation for piece 138.

139.

Partial handwritten musical notation for piece 139.

140.

Partial handwritten musical notation for piece 140.

141.

Partial handwritten musical notation for piece 141.

137 My Harp alone

Whitaker-

Andante
Et profano

Handwritten musical notation for 'My Harp alone' on a single staff. The piece is in G major and 3/8 time. It begins with a treble clef and a key signature of one sharp (F#). The tempo is marked 'Andante' and the mood is 'Et profano'. The notation includes various note values, rests, and dynamic markings.

138 In my cottage near a wood

Handwritten musical notation for 'In my cottage near a wood' on a single staff. The piece is in G major and 3/8 time. It begins with a treble clef and a key signature of one sharp (F#). The notation includes various note values, rests, and dynamic markings.

Donald's Favorite Scotch Air

139 Glasgow

Handwritten musical notation for 'Glasgow' on a single staff. The piece is in G major and 3/8 time. It begins with a treble clef and a key signature of one sharp (F#). The notation includes various note values, rests, and dynamic markings.

Oh! Rest the Babe
From the Play of Guy Raversing

140

Handwritten musical notation for 'Tessy's own' on a single staff. The piece is in G major and 3/8 time. It begins with a treble clef and a key signature of one sharp (F#). The notation includes various note values, rests, and dynamic markings.

Tessy's own

141

Handwritten musical notation for an unnamed piece on a single staff. The piece is in G major and 3/8 time. It begins with a treble clef and a key signature of one sharp (F#). The notation includes various note values, rests, and dynamic markings.

142. Sweet Robin -

Andante $\text{G}^{\#} \text{9}$

Handwritten musical notation for 'Sweet Robin' on two staves. The first staff begins with a treble clef, a key signature of one sharp (F#), and a 9/8 time signature. The tempo marking 'Andante' is written above the first staff. The music consists of a melody with eighth and sixteenth notes and a bass line with eighth notes.

143. *Shoo a Horse* $\text{G}^{\#} \text{3/4}$

Handwritten musical notation for 'Shoo a Horse' on two staves. The first staff begins with a treble clef, a key signature of one sharp (F#), and a 3/4 time signature. The music features a melody with eighth and sixteenth notes and a bass line with eighth notes.

144. *Bonny House Air* $\text{G}^{\#} \text{C}$

Handwritten musical notation for 'Bonny House Air' on two staves. The first staff begins with a treble clef, a key signature of one sharp (F#), and a common time signature (C). The music consists of a melody with eighth and sixteenth notes and a bass line with eighth notes.

145. *The Runaway Bride* $\text{G}^{\#} \text{9}$

Handwritten musical notation for 'The Runaway Bride' on two staves. The first staff begins with a treble clef, a key signature of one sharp (F#), and a 9/8 time signature. The music features a melody with eighth and sixteenth notes and a bass line with eighth notes.

146. *Portuguese Hymn* $\text{G}^{\#} \text{2/4}$

Handwritten musical notation for 'Portuguese Hymn' on two staves. The first staff begins with a treble clef, a key signature of one sharp (F#), and a 2/4 time signature. The music consists of a melody with eighth and sixteenth notes and a bass line with eighth notes.

147. The

Andante

Handwritten musical notation for 'The' on two staves. The first staff begins with a treble clef and a common time signature. The tempo marking 'Andante' is written above the first staff. The music consists of a melody with eighth and sixteenth notes and a bass line with eighth notes.

148. *Co. Green*

Handwritten musical notation for 'Co. Green' on two staves. The first staff begins with a treble clef and a common time signature. The music consists of a melody with eighth and sixteenth notes and a bass line with eighth notes.

149. *Songs of S*

Handwritten musical notation for 'Songs of S' on two staves. The first staff begins with a treble clef and a common time signature. The music consists of a melody with eighth and sixteenth notes and a bass line with eighth notes.

150. *Ch. he he
mention H*

Handwritten musical notation for 'Ch. he he mention H' on two staves. The first staff begins with a treble clef and a common time signature. The music consists of a melody with eighth and sixteenth notes and a bass line with eighth notes.

147. The Cuckoo -

(By Miss Capron)

Andante

Handwritten musical notation for 'The Cuckoo' in G major, 4/4 time. It consists of three staves of music. The first staff begins with the tempo marking 'Andante' and a treble clef. The melody is characterized by a series of eighth and sixteenth notes, with a prominent trill in the middle section.

148. O'er which the Dove

(In the Bird of a Feather)

Handwritten musical notation for 'O'er which the Dove' in G major, 4/4 time. It consists of three staves of music. The melody is written in a treble clef and features a mix of eighth and sixteenth notes, with some triplet markings.

149. Sprig of Shillelagh

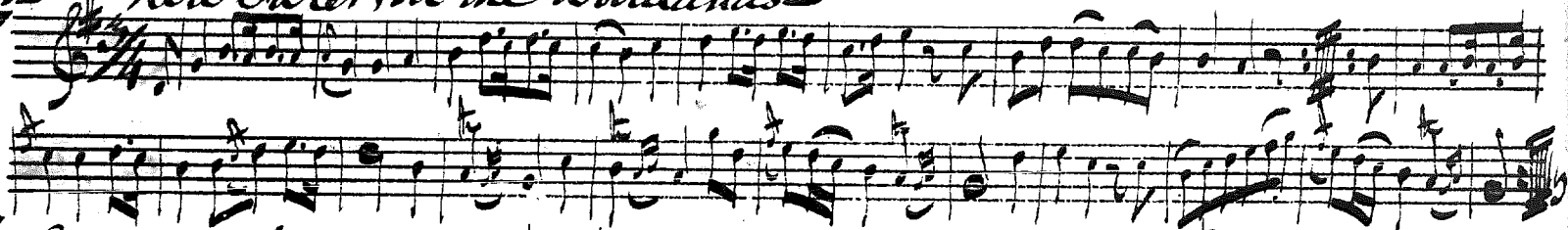
Handwritten musical notation for 'Sprig of Shillelagh' in G major, 4/4 time. It consists of three staves of music. The melody is written in a treble clef and features a mix of eighth and sixteenth notes, with some triplet markings.

150. Oh! how we never mention her

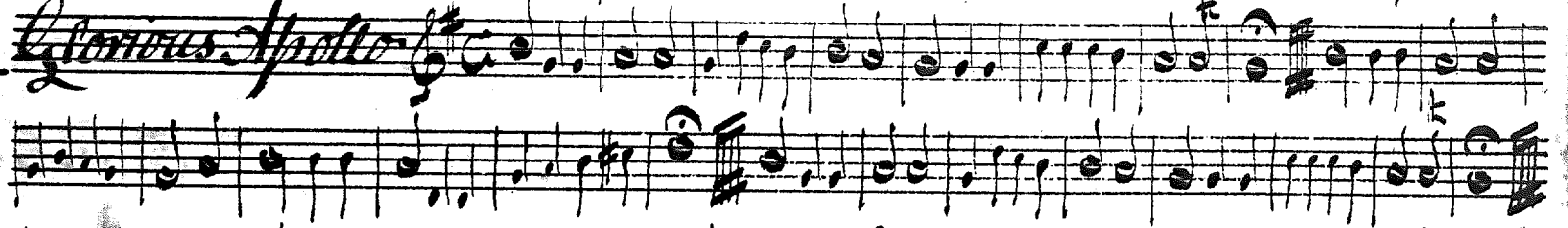
Slow

Handwritten musical notation for 'Oh! how we never mention her' in G major, 4/4 time. It consists of two staves of music. The tempo marking 'Slow' is written above the first staff. The melody is written in a treble clef and features a mix of eighth and sixteenth notes.

151. How Sweet in the Woodlands



152. Glorious Apollo



Sicilian Mariners Hymn



153

Addio cor mio

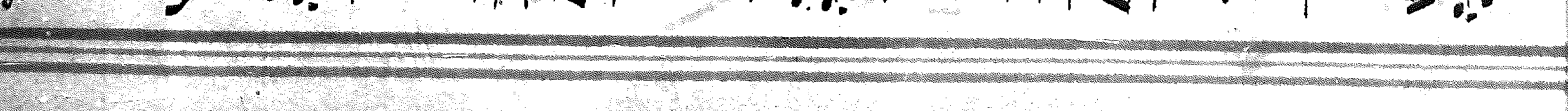


154

The Hawk whoops on High



155

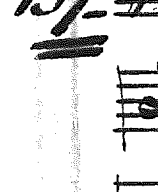


For-ward

156



157



158



156 The Manly Hero

(From the Lauberkfote)

Exp. *Exp.*

Musical notation for 'The Manly Hero' in G major, 2/4 time. It consists of two staves. The first staff begins with a treble clef, a key signature of one sharp (F#), and a 2/4 time signature. The melody is written in a single line. The second staff continues the melody with various note values and rests.

157 Pnyel German Hymn

Musical notation for 'Pnyel German Hymn' in G major, 2/4 time. It consists of two staves. The first staff begins with a treble clef, a key signature of one sharp (F#), and a 2/4 time signature. The melody is written in a single line. The second staff continues the melody with various note values and rests.

Musical notation for 'The Flying Boy' in G major, 2/4 time. It consists of two staves. The first staff begins with a treble clef, a key signature of one sharp (F#), and a 2/4 time signature. The melody is written in a single line. The second staff continues the melody with various note values and rests.

158 Quadrille

Musical notation for 'Quadrille' in G major, 2/4 time. It consists of two staves. The first staff begins with a treble clef, a key signature of one sharp (F#), and a 2/4 time signature. The melody is written in a single line. The second staff continues the melody with various note values and rests.

Musical notation for 'The Hooper' in G major, 2/4 time. It consists of two staves. The first staff begins with a treble clef, a key signature of one sharp (F#), and a 2/4 time signature. The melody is written in a single line. The second staff continues the melody with various note values and rests.

For - ward

159. *The Paddy Girl of Derby Co!* Parry

Musical notation for the first piece, featuring a treble clef, a key signature of one sharp (F#), and a 2/4 time signature. The melody is written on a single staff.

160. *Ap. Shinkin*

Musical notation for the second piece, featuring a treble clef, a key signature of one sharp (F#), and a 3/8 time signature. The melody is written on a single staff.

161. *Hayden's Surprise* P. C.

Musical notation for the third piece, featuring a treble clef, a key signature of one sharp (F#), and a 3/4 time signature. The melody is written on a single staff.

162. *Andrew Carey -*

Musical notation for the fourth piece, featuring a treble clef, a key signature of one sharp (F#), and a 3/8 time signature. The melody is written on a single staff.

163. *The Maid of Gloucester*

Musical notation for the fifth piece, featuring a treble clef, a key signature of one sharp (F#), and a 3/8 time signature. The melody is written on a single staff.

164. *Mary Ann or the Ragman - National Waltz*

Musical notation for the sixth piece, featuring a treble clef, a key signature of one sharp (F#), and a 3/4 time signature. The melody is written on a single staff.

165. *Waltz*

Musical notation for the seventh piece, featuring a treble clef, a key signature of one sharp (F#), and a 3/4 time signature. The melody is written on a single staff.

165. *Waltz*

Musical notation for the seventh piece on the adjacent page, featuring a treble clef, a key signature of one sharp (F#), and a 3/4 time signature. The melody is written on a single staff.

166. *Waltz*

Musical notation for the eighth piece on the adjacent page, featuring a treble clef, a key signature of one sharp (F#), and a 3/4 time signature. The melody is written on a single staff.

167. *Waltz*

Musical notation for the ninth piece on the adjacent page, featuring a treble clef, a key signature of one sharp (F#), and a 3/4 time signature. The melody is written on a single staff.

168. *Waltz*

Musical notation for the tenth piece on the adjacent page, featuring a treble clef, a key signature of one sharp (F#), and a 3/4 time signature. The melody is written on a single staff.

165

Come Rest on this Bosom

(From the Irish Melodies)

Parry

Handwritten musical score for 'Come Rest on this Bosom' in G major, 3/4 time. It consists of three staves. The first staff is the melody, and the second and third staves are accompaniment. The piece ends with a double bar line and repeat dots.

166

Was sorrow thy young
Days shade

Handwritten musical score for 'Was sorrow thy young Days shade' in G major, 3/4 time. It consists of three staves. The first staff is the melody, and the second and third staves are accompaniment. The piece ends with a double bar line and repeat dots.

167

The Mad Boy

Handwritten musical score for 'The Mad Boy' in G major, 3/4 time. It consists of three staves. The first staff is the melody, and the second and third staves are accompaniment. The piece ends with a double bar line and repeat dots.

168

Will you come
to the Tower

By J. Moore Esq

Handwritten musical score for 'Will you come to the Tower' in G major, 3/4 time. It consists of three staves. The first staff is the melody, and the second and third staves are accompaniment. The piece ends with a double bar line and repeat dots.

169 Nancy's to the Green wood lane

Handwritten musical notation for the piece 'Nancy's to the Green wood lane'. It consists of two staves of music in treble clef with a key signature of one sharp (F#) and a common time signature (C). The notation includes various note values, rests, and bar lines.

170 Lullaby

Handwritten musical notation for the piece 'Lullaby'. It consists of two staves of music in treble clef with a key signature of one sharp (F#) and a common time signature (C). The notation includes various note values, rests, and bar lines.

171 Kinloch of Kinloch

Handwritten musical notation for the piece 'Kinloch of Kinloch'. It consists of two staves of music in treble clef with a key signature of one sharp (F#) and a common time signature (C). The notation includes various note values, rests, and bar lines.

172 Shepherd's Share
Loth My Love

Handwritten musical notation for the pieces 'Shepherd's Share' and 'Loth My Love'. It consists of two staves of music in treble clef with a key signature of one sharp (F#) and a common time signature (C). The notation includes various note values, rests, and bar lines.

173 Lord Ramsay's Strathspey

Handwritten musical notation for the piece 'Lord Ramsay's Strathspey'. It consists of two staves of music in treble clef with a key signature of one sharp (F#) and a common time signature (C). The notation includes various note values, rests, and bar lines.

174

Partial handwritten musical notation for piece 174, showing the beginning of a staff in treble clef.

175

Partial handwritten musical notation for piece 175, showing the beginning of a staff in treble clef.

176

Partial handwritten musical notation for piece 176, showing the beginning of a staff in treble clef.

177

Partial handwritten musical notation for piece 177, showing the beginning of a staff in treble clef.

174. Minuet - La Borbon

Handwritten musical notation for the piece "Minuet - La Borbon". It consists of two staves of music in treble clef, with a key signature of one sharp (F#) and a time signature of 3/4. The notation includes various note values, rests, and dynamic markings.

175. Lady Coventry's Minuet

Handwritten musical notation for "Lady Coventry's Minuet". It consists of two staves of music in treble clef, with a key signature of one sharp (F#) and a time signature of 3/4. The notation includes various note values, rests, and dynamic markings.

176. Hessian Air

Handwritten musical notation for "Hessian Air". It consists of two staves of music in treble clef, with a key signature of one sharp (F#) and a time signature of 4/4. The notation includes various note values, rests, and dynamic markings.

Highland March - "In the Garb of Old Gael"

177. on G.

Handwritten musical notation for "Highland March - 'In the Garb of Old Gael'". It consists of two staves of music in treble clef, with a key signature of one sharp (F#) and a time signature of 4/4. The notation includes various note values, rests, and dynamic markings.

By Capt. Price

178. *Timberly's Farewell Hymn*

Common $\frac{4}{4}$

Handwritten musical notation for 'Timberly's Farewell Hymn' in common time (4/4). The piece consists of two staves of music. The first staff begins with a treble clef, a key signature of one sharp (F#), and a common time signature. The melody is written in a simple, hymn-like style with various note values and rests.

179. *Greenwich Proficiency*

$\frac{2}{4}$

Handwritten musical notation for 'Greenwich Proficiency' in 2/4 time. The piece consists of two staves of music. The first staff begins with a treble clef, a key signature of one sharp (F#), and a 2/4 time signature. The melody is more rhythmic and complex than the previous piece.

The Gordons has the Guiding Orb
Every One

Handwritten musical notation for 'The Gordons has the Guiding Orb' in 2/4 time. The piece consists of two staves of music. The first staff begins with a treble clef, a key signature of one sharp (F#), and a 2/4 time signature. The melody is simple and hymn-like.

180

Handwritten musical notation for piece 180 in 2/4 time. The piece consists of two staves of music. The first staff begins with a treble clef, a key signature of one sharp (F#), and a 2/4 time signature. The melody is simple and hymn-like.

181. *Ganey-Brook*

$\frac{2}{4}$

Handwritten musical notation for 'Ganey-Brook' in 2/4 time. The piece consists of two staves of music. The first staff begins with a treble clef, a key signature of one sharp (F#), and a 2/4 time signature. The melody is simple and hymn-like.

182

Handwritten musical notation for piece 182 in 2/4 time. The piece consists of two staves of music. The first staff begins with a treble clef, a key signature of one sharp (F#), and a 2/4 time signature. The melody is simple and hymn-like.

183

Handwritten musical notation for piece 183 in 2/4 time. The piece consists of two staves of music. The first staff begins with a treble clef, a key signature of one sharp (F#), and a 2/4 time signature. The melody is simple and hymn-like.

184

Handwritten musical notation for piece 184 in 2/4 time. The piece consists of two staves of music. The first staff begins with a treble clef, a key signature of one sharp (F#), and a 2/4 time signature. The melody is simple and hymn-like.

185

Handwritten musical notation for piece 185 in 2/4 time. The piece consists of two staves of music. The first staff begins with a treble clef, a key signature of one sharp (F#), and a 2/4 time signature. The melody is simple and hymn-like.

186

Handwritten musical notation for piece 186 in 2/4 time. The piece consists of two staves of music. The first staff begins with a treble clef, a key signature of one sharp (F#), and a 2/4 time signature. The melody is simple and hymn-like.