

LIFE LET US CHERISH.

Musical notation for the piece 'LIFE LET US CHERISH.' It consists of two staves of music in a treble clef with a key signature of one sharp (F#) and a 3/4 time signature. The melody is simple and pleasant, with a clear cadence at the end of the second staff.

WALTZ.

Musical notation for a waltz. It consists of three staves of music in a treble clef with a key signature of one sharp (F#) and a 3/4 time signature. The music is characterized by a light, rhythmic feel typical of a waltz, with a mix of eighth and sixteenth notes.

LA FLORA.

Musical notation for 'LA FLORA.' It consists of two staves of music in a treble clef with a key signature of one sharp (F#) and a 2/4 time signature. The melody is more active and rhythmic than the previous pieces, featuring many eighth and sixteenth notes.

BURNET'S RONDO.

Musical notation for 'BURNET'S RONDO.' It consists of five staves of music in a treble clef with a key signature of one sharp (F#) and a 2/4 time signature. The piece is marked with a 'C' time signature and a '3' above the first staff, indicating a 3/8 time signature. The music is highly rhythmic and features many sixteenth and thirty-second notes. A 'D.C.' (Da Capo) marking is at the end of the fifth staff.

A PIPER O'ER THE MEADOWS STRAYING.

Musical notation for 'A PIPER O'ER THE MEADOWS STRAYING.' It consists of two staves of music in a treble clef with a key signature of one sharp (F#) and a 2/4 time signature. The melody is simple and evocative, with a clear cadence at the end of the second staff.

Allegro

BUONAPARTES WALTZ.

Musical notation for 'BUONAPARTES WALTZ.' It consists of two staves of music in a treble clef with a key signature of one sharp (F#) and a 3/4 time signature. The music is lively and rhythmic, with a mix of eighth and sixteenth notes.



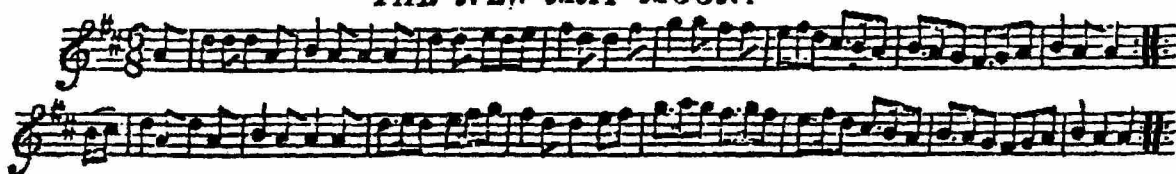
**THE MILLER of DRONE.**



**ALDRIDGE'S HORNPIPE.**



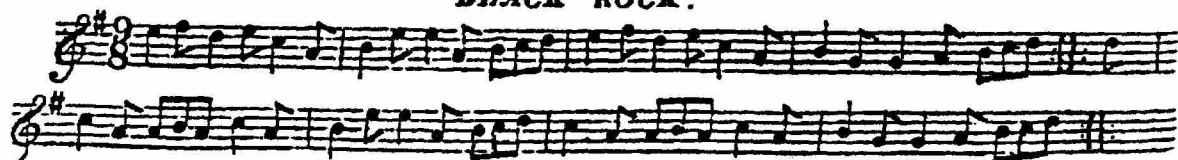
**THE NEW MAY MOON.**



**LORD MOIRA'S WELCOME to SCOTLAND.**



**BLACK ROCK.**



THE ROSE TREE with new Var.s

(S.T.C.)

Musical score for 'THE ROSE TREE with new Var.s'. The score is written in treble clef with a key signature of one sharp (F#) and a 2/4 time signature. It consists of ten staves of music. The first staff begins with a dynamic marking of *f*. The second staff is labeled 'Var. 1.'. The third staff is labeled 'Var. 2.' and includes the tempo marking 'Spiritoso'. The fourth staff is labeled 'Var. 3.'. The fifth staff is labeled 'Var. 4.'. The score includes various musical notations such as slurs, accents, and dynamic markings.

MISS FORBES'S FAREWELL.

Musical score for 'MISS FORBES'S FAREWELL.'. The score is written in treble clef with a key signature of one sharp (F#) and a 2/4 time signature. It consists of two staves of music. The first staff begins with a dynamic marking of *f*.

LORD CATHCART.

Musical score for 'LORD CATHCART.'. The score is written in treble clef with a key signature of one sharp (F#) and a 2/4 time signature. It consists of three staves of music. The first staff begins with a dynamic marking of *f*.

Musical score for 'THE COLLEGE HORNPIPE' consisting of three staves of music in G major and 2/4 time. The melody is characterized by eighth and sixteenth notes, with some triplets and slurs.

THE HIGHLAND FABRICK. *Middle Quick March*

Musical score for 'THE HIGHLAND FABRICK' consisting of five staves of music in G major and 2/4 time. The piece is a 'Middle Quick March' and features a complex, rhythmic melody with many sixteenth and thirty-second notes, including triplets and slurs.

**Maestoso**

Union Pipe **GRAND MARCH** and **QUICK STEP.**

(S.T.C.)

Musical score for 'Union Pipe GRAND MARCH and QUICK STEP' consisting of six staves of music in G major and 2/4 time. The score is divided into three sections: a 'Maestoso' section, a 'Trio' section, and a 'Quick Step' section. The 'Maestoso' section is the first two staves, the 'Trio' section is the next two staves, and the 'Quick Step' section is the final two staves. The 'Quick Step' section is marked with a 2/4 time signature and features a more rhythmic, dance-like melody.

## DALINTY DAVY with VARI

(S.T.C.)

Musical score for "DALINTY DAVY with VARI" (S.T.C.). The score consists of four systems of two staves each, all in G major and 2/4 time. The first system is the main melody. The second system is labeled "Var: 1." and features a more rhythmic accompaniment. The third system is labeled "Var: 2" and includes a triplet in the first measure. The fourth system is labeled "Giga. Var: 3." and has a faster tempo. The fifth system is labeled "Var: 4." and features a complex, syncopated accompaniment. The piece concludes with a double bar line.

## FLOWERS OF EDINBURG

Musical score for "FLOWERS OF EDINBURG". The score consists of two staves in C major and 2/4 time. The melody is simple and characteristic of the Scottish folk song. The accompaniment provides a steady harmonic support.

## GRANAH WEALE

Musical score for "GRANAH WEALE". The score consists of three staves in G major and 2/4 time. The melody is lively and features a prominent eighth-note pattern. The accompaniment includes a complex, syncopated bass line.

OLD TOWLER.

BOB and JOAN with Var<sup>s</sup>

Brisk

THE RAKES OF WESTMEATH.

LLEWELLYN a favorite Welch Air.

COLCLOUGH'S HORNPIPE.

OLD TOWLER.



BOB and JOAN with Var<sup>s</sup>

Brisk



THE RAKES OF WESTMEATH.



LLEWELLYN a favorite Welch Air.



COLCLOUGH'S HORNPIPE.



**GRAMACHREE with Var.**

A musical score for the piece 'GRAMACHREE with Var.' consisting of six staves of music. The music is written in a single melodic line on a treble clef staff with a key signature of one sharp (F#) and a common time signature (C). The piece features a complex, rhythmic melody with many sixteenth and thirty-second notes, and includes several trills and slurs.

**THE MUNSTER-RAKE.**

A musical score for the piece 'THE MUNSTER-RAKE' consisting of two staves of music. The music is written in a single melodic line on a treble clef staff with a key signature of one sharp (F#) and a 9/8 time signature. The melody is characterized by a steady eighth-note rhythm with some triplet patterns.

**MAGGIE LAWDER with Var<sup>s</sup>**

A musical score for the piece 'MAGGIE LAWDER with Var<sup>s</sup>' consisting of eight staves of music. The music is written in a single melodic line on a treble clef staff with a key signature of one sharp (F#) and a common time signature (C). The piece features a complex, rhythmic melody with many sixteenth and thirty-second notes, and includes several trills and slurs. The score is divided into two variations: 'Var: 1.' is indicated above the third staff, and 'Var: 2.' is indicated above the eighth staff.



A musical score for a piece in G major and 2/4 time. It consists of eight staves of music. The first six staves contain the main melody with various ornaments and triplets. The seventh staff is labeled 'Var: 3.' and features a more complex, rhythmic variation. The eighth staff concludes the piece with a final cadence.

THE SCOTS CAME O'ER THE BORDERS.

A musical score for a piece in G major and 2/4 time. It consists of five staves of music. The first two staves show the main melody. The third staff is labeled 'Vari<sup>o</sup>' and contains a variation of the melody. The fourth and fifth staves continue the piece with further melodic development.

BURN'S FAREWELL

A musical score for a piece in G major and 2/4 time. It consists of two staves of music. The first staff contains the main melody, and the second staff provides a supporting accompaniment.